

**GEORGE MASON UNIVERSITY
CENTER FOR THE ARTS**

~ Great Performances at Mason ~
presents

**MARK MORRIS
DANCE GROUP**

Chelsea Acree	Lauren Grant	Brandon Randolph
Sam Black	Brian Lawson	Nicole Sabella
Durell R. Comedy*	Aaron Loux	Billy Smith
Rita Donahue	Laurel Lynch	Noah Vinson
Domingo Estrada, Jr.	Stacy Martorana	Jenn Weddel
Lesley Garrison	Dallas McMurray	Michelle Yard

**apprentice*

MMDG MUSIC ENSEMBLE

Colin Fowler	George Shevtsov	Jessica Troy
Andrew Janss	Nicholas Tavani	Georgy Valtchev

ARTISTIC DIRECTOR

Mark Morris

EXECUTIVE DIRECTOR

Nancy Umanoff

Friday, February 19, 2016 at 8 p.m.
Saturday, February 20, 2016 at 8 p.m.

The Center for the Arts gratefully acknowledges the generous and ongoing support of the Friends of the Center for the Arts.

FOOD AND DRINK ARE NOT ALLOWED IN THE THEATER.

PATRONS ARE REQUESTED TO TURN OFF PAGERS, CELLULAR PHONES, AND SIGNAL WATCHES DURING PERFORMANCES.
THE TAKING OF PHOTOGRAPHS AND THE USE OF RECORDING EQUIPMENT ARE NOT ALLOWED IN THE THEATER.

PROGRAM

Cargo

Music: Darius Milhaud, *La création du monde*, Op. 58

Costume Design: Katherine McDowell

Lighting Design: Nicole Pearce

Georgy Valtchev, *violin*; Nicholas Tavani, *violin*; Jessica Troy, *viola*;
Andrew Janss, *cello*; Colin Fowler, *piano*

Sam Black
Rita Donahue
Domingo Estrada, Jr.
Lesley Garrison
Lauren Grant
Aaron Loux
Laurel Lynch
Brandon Randolph
Jenn Weddel

Cargo Cults of the South Pacific believed that manufactured goods (“cargo”) were created for them by ancestral spirits.

Premiere: June 26, 2005, Seiji Ozawa Hall, Tanglewood Music Center,
Lenox, Massachusetts

Commissioned in part by the Tanglewood Music Center of the Boston Symphony Orchestra, James Levine, Music Director, through the generous support of Michael and Sally Gordon and the Florence Gould Foundation

Whelm

Music: Claude Debussy, *Des pas sur la neige*, *Étude pour les notes répétées*, *La cathédrale engloutie*

Costume Design: Elizabeth Kurtzman

Lighting Design: Nick Kolin

Colin Fowler, *piano*

Domingo Estrada, Jr.
Lesley Garrison
Noah Vinson
Jenn Weddel

Premiere: April 22, 2015, Howard Gilman Opera House,
Brooklyn Academy of Music, Brooklyn, New York

Intermission

Resurrection

Music: Richard Rodgers, *Slaughter on Tenth Avenue*

Costume Design: Isaac Mizrahi

Lighting Design: Michael Chybowski

Recorded music

Sam Black
Rita Donahue
Domingo Estrada, Jr.
Lesley Garrison
Lauren Grant
Brian Lawson
Aaron Loux
Laurel Lynch
Stacy Martorana
Dallas McMurray
Nicole Sabella
Billy Smith
Noah Vinson
Jenn Weddel

Premiere: July 18, 2002, Page Auditorium, Durham, North Carolina

Resurrection was commissioned by the American Dance Festival with support from the Doris Duke Awards for New Work and by the Boston Pops Orchestra, Keith Lockhart, conductor.

Slaughter on Tenth Avenue used by special arrangement with The Rodgers and Hammerstein Organization, rnh.com

The

Music: Johann Sebastian Bach, Brandenburg Concerto No. 1 in F Major, BWV 1046 (arranged for piano four-hands by Max Reger)

Costume Design: Elizabeth Kurtzman

Lighting Design: Nicole Pearce

Colin Fowler, *piano*; George Shevtsov, *piano*

Sam Black	Stacy Martorana
Rita Donahue	Dallas McMurray
Domingo Estrada, Jr.	Brandon Randolph
Lesley Garrison	Nicole Sabella
Lauren Grant	Billy Smith
Brian Lawson	Noah Vinson
Aaron Loux	Jenn Weddel
Laurel Lynch	Michelle Yard

Premiere: June 25, 2015, Seiji Ozawa Hall, Tanglewood Music Center, Lenox, Massachusetts

Commissioned in part by the Tanglewood Music Center of the Boston Symphony Orchestra in honor of its 75th Anniversary Season

Major support for the Mark Morris Dance Group is provided by American Express, Anonymous, Sarabeth Berman and Evan Osnos, Morley and Frederick Bland, Allan and Rhea Bufferd, Iris Cohen and Mark Selinger, Suzy Kellems Dominik, Doris Duke Charitable Foundation, Judith R. and Alan H. Fishman, Shelby and Frederick Gans Fund, The Howard Gilman Foundation, Sandy Hill, Ellsworth Kelly Foundation, The Pierre and Tana Matisse Foundation, Suzanne Berman and Timothy J. McClimon, The Andrew W. Mellon Foundation, Mertz Gilmore Foundation, Meyer Sound/Helen and John Meyer, Isaac Mizrahi & Arnold Germer, New England Foundation for the Arts, Stavros Niarchos Foundation, Ellen and Arnold Offner, PARC Foundation, Poss Family Foundation, The Fan Fox and Leslie R. Samuels Foundation, The SHS Foundation, The Shubert Foundation, Diane Solway and David Resnicow, Jane Stine and R.L. Stine, The White Cedar Fund, and Friends of MMDG.

The Mark Morris Dance Group is supported in part by public funds from the New York City Department of Cultural Affairs in partnership with the City Council, Brooklyn Borough President Eric L. Adams, Council Member Helen Rosenthal, the New York City Department for the Aging, the New York State Council on the Arts with the support of Governor Andrew Cuomo and the New York State Legislature, and the National Endowment for the Arts.

MEET THE ARTISTS



MARK MORRIS was born on August 29, 1956, in Seattle, Washington, where he studied with Verla Flowers and Perry Brunson. In the early years of his career, he performed with the companies of Lar Lubovitch, Hannah Kahn, Laura Dean, Eliot Feld, and the Koleda Balkan Dance Ensemble. He formed the Mark Morris Dance Group (MMDG) in 1980, and has since created close to 150 works for the company. From 1988 to 1991, he was Director of Dance at Brussels' Théâtre Royal de la Monnaie, the national opera house of Belgium. In 1990, he founded the White Oak Dance Project with Mikhail Baryshnikov. Much in demand as a ballet choreographer, Morris has created 20 ballets since 1986 and his work has been performed by companies worldwide, including San Francisco Ballet, American Ballet Theatre, Ballet du Grand Théâtre de Genève, and the Royal New Zealand Ballet. Noted for his musicality, Morris has been described as "undeviating in his devotion to music" (*The New Yorker*). He began conducting performances for MMDG in 2006 and has since conducted at The International Festival of Arts and Ideas, Lincoln Center, and BAM (Brooklyn Academy of Music). He served as Music Director for the 2013 Ojai Music Festival. He also works extensively in opera, directing and choreographing productions for the Metropolitan Opera, New York City Opera, English National Opera, and The Royal Opera, Covent Garden, among others. He was named a Fellow of the MacArthur Foundation in 1991 and has received 12 honorary doctorates to date. He has taught at the University of Washington, Princeton University, and Tanglewood Music Center. He is a member of the American Academy of Arts and Sciences and the American Philosophical Society, and has served as an Advisory Board Member for the Rolex Mentor and Protégé Arts Initiative. Morris has received the Samuel H. Scripps/American Dance Festival Award for Lifetime Achievement (2007), the Leonard Bernstein Lifetime Achievement Award for the Elevation of Music in Society (2010), the Benjamin Franklin Laureate Prize for Creativity (2012), Cal Performances Award of Distinction in the Performing Arts (2013), and the Orchestra of St. Luke's Gift of Music Award (2014). On August 8, 2015, Mark Morris was inducted into the Mr. and Mrs. Cornelius Vanderbilt Whitney Hall of Fame at the National Museum of Dance in Saratoga Springs, New York. Morris opened the Mark Morris Dance Center in Brooklyn, New York, in 2001 to provide a home for his company, rehearsal space for the dance community, outreach programs for children and seniors, and a school offering dance classes to students of all ages and abilities.

MARK MORRIS DANCE GROUP was formed in 1980 and gave its first performance that year in New York City. The company's touring schedule steadily expanded to include cities in the United States and around the world, and, in 1986, it made its first national television program for the PBS series *Dance in America*. In 1988, MMDG was invited to become the national dance company of Belgium, and spent three years in residence at the Théâtre Royal de la Monnaie in Brussels. The Dance Group returned to the United States in 1991 as one of the world's leading dance companies. Based in Brooklyn, New York, MMDG maintains strong ties to presenters in several cities around the world, most notably to its West Coast home, Cal Performances in Berkeley, California, and its Midwest home, the Krannert Center for the Performing Arts at the University of Illinois at Urbana-Champaign. MMDG also appears regularly in New York, Boston, Seattle, and Fairfax. The company made its debut at the Mostly Mozart Festival in 2002 and at the Tanglewood Music Festival in 2003, and has since been invited to both festivals annually. From the company's many London seasons, it has received two Laurence Olivier Awards and a Critics' Circle Dance Award for Best Foreign Dance Company. Reflecting Morris' commitment to live music, the Dance Group has featured live musicians in every performance since the formation of the MMDG Music Ensemble in

1996. MMDG regularly collaborates with renowned musicians, including cellist Yo-Yo Ma, pianist Emanuel Ax, mezzo-soprano Stephanie Blythe, and jazz trio The Bad Plus, as well as leading orchestras and opera companies, including the Metropolitan Opera, English National Opera, and the London Symphony Orchestra. MMDG frequently works with distinguished artists and designers, including painters Howard Hodgkin and Robert Bordo, set designers Adrienne Lobel and Allen Moyer, costume designers Martin Pakledinaz and Isaac Mizrahi, and many others. MMDG's film and television projects include *Dido and Aeneas*, *The Hard Nut*, *Falling Down Stairs*, two documentaries for the UK's *South Bank Show*, and PBS's *Live From Lincoln Center*. On March 27, 2015, Morris' signature work *L'Allegro, il Penseroso ed il Moderato* had its national television premiere on PBS's *Great Performances*. While on tour, the Dance Group partners with local cultural institutions and community organizations to present Access/MMDG, a program of arts and humanities-based activities for people of all ages and abilities. This is MMDG's 18th season performing at George Mason University's Center for the Arts

The MMDG MUSIC ENSEMBLE, formed in 1996, is integral to the Dance Group. "With the dancers come the musicians...and what a difference it makes" (*Classical Voice of North Carolina*). The Ensemble's repertory ranges from 17th century works by John Wilson and Henry Purcell to more recent scores by Lou Harrison and Henry Cowell. The musicians also participate in Access/MMDG, the Dance Group's educational and community programming at home and on the road.



Matthew Rose (*rehearsal director*) began his dance training in Midland, Michigan, with Linda Z. Smith at the age of 17. After receiving his B.F.A. in Dance from the University of Michigan in 1992, he moved to New York City. He was a soloist with the Martha Graham Dance Company from 1993 to 1996, and began working with MMDG in 1997. After several years of performing full-time with the Dance Group, he began assisting Morris with the creation of new works. He has been the company's rehearsal director since 2006.



Chelsea Acree grew up in Baltimore, Maryland, where she began her dance training with Sharon Lerner, then continued at Carver Center for the Arts and Technology. Since receiving her B.F.A. in Dance from Purchase College in 2005, she has had the opportunity to work with a variety of artists including SYREN Modern Dance, Laura Peterson, Hilary Easton + Company, and Michael and the Go-Getters. Acree is on the faculty at The School at the Mark Morris Dance Center, where she teaches kids and adults how to move through space. She began working with MMDG in 2007 and joined the company in 2011.



Sam Black is originally from Berkeley, California, where he began studying tap at the age of nine with Katie Maltsberger. He received his B.F.A. in Dance from SUNY Purchase, and currently teaches MMDG master classes and Dance for PD®. He first appeared with MMDG in 2005 and became a company member in 2007.

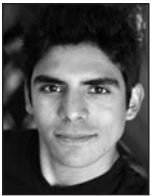
Durell R. Comedy, a native of Prince Georges County, Maryland, began dancing at the age of six with Spirit Wings Dance Company. He graduated from the Visual & Performing Arts program of Suitland High School in 2004 and *magna cum laude* from George Mason University, receiving his B.F.A. Degree in Dance Performance in 2008.



Since then, he's worked and performed with The Metropolitan Opera, Troy Powell, and Kyle Abraham, among others. Comedy was a member of the Limón Dance Company from 2009 to 2015, performing principal and soloist roles. He's also appeared as a soloist dancer in Baltimore Opera Company's *Aida* and worked with Washington National Opera from 2013 to 2014 as a principal dancer and dance captain. He was a former fellowship student at the Ailey School and a 2014 adjunct faculty member at George Mason University's School of Dance. Comedy began his apprenticeship with MMDG in November 2015.



Rita Donahue was born and raised in Fairfax, Virginia, and attended George Mason University. She graduated *magna cum laude* in 2002, receiving a B.A. in English and a B.F.A. in Dance. Donahue danced with bopi's black sheep/dances by kraigpatterson and joined MMDG in 2003.



Domingo Estrada, Jr., a native of Victoria, Texas, studied martial arts and earned his black belt in 1994. He danced ballet folklorico through his church for 11 years. Estrada earned his B.F.A. in Ballet and Modern Dance from Texas Christian University and had the honor of working with the late Fernando Bujones. During his undergraduate studies, he attended the American Dance Festival where he had the privilege of performing *Skylight*, a classic work by choreographer Laura Dean. He debuted with MMDG in 2007 and became a company member in 2009. Estrada would like to thank God, his family, and all who support his passion.



Colin Fowler (*music director, piano*) began his musical study at the age of five in Kansas City and went on to study at the prestigious Interlochen Arts Academy. He continued his education at The Juilliard School, where he received his Bachelor of Music in 2003 and his Master of Music in 2005. While at Juilliard, he studied piano with Abbey Simon, organ with Gerre Hancock and Paul Jacobs, harpsichord with Lionel Party, and conducting with James DePriest and Judith Clurman. A versatile musician and conductor, Fowler works in many areas of the music scene in New York City. He is a veteran of numerous Broadway shows, most recently performing in the Tony Award-winning musical *Jersey Boys*. A seasoned church musician, Fowler is currently the organist at Marble Collegiate Church on Fifth Avenue and also leads services and concerts at Park Avenue Synagogue, where he has served as Music Director since 2012. As a classical soloist and collaborative artist, he has performed and recorded with many world renowned musicians and ensembles, including Deborah Voigt and the Los Angeles Philharmonic. He began to collaborate with the Mark Morris Dance Group in 2005 and has since then performed over 40 pieces with the company on almost every keyboard instrument possible, including the harmonium and toy piano, and has conducted performances of *Mozart Dances*, *Acis and Galatea*, and *The Hard Nut*. Hailed by *The New York Times* as "invaluable" and "central to Morris' music," he was appointed music director in 2013.



Lesley Garrison grew up in Swansea, Illinois, and received her early dance training at the Center of Creative Arts in St. Louis, Missouri, and Interlochen Arts Academy in Interlochen, Michigan. She studied at the Rotterdamse Dansacademie in The Netherlands and holds a B.F.A. from Purchase College. She first performed with MMDG in 2007 and became a company member in 2011. Garrison teaches at The School at The Mark Morris Dance Center and for the Dance for PD® program.



Lauren Grant has danced with MMDG since 1996, appearing in nearly 60 of Mark Morris' works. She is on the faculty at The School at The Mark Morris Dance Center, leads master classes around the globe, sets Mr. Morris' work at universities, and frequently leads classes for the company. Grant received a 2015 New York Dance and Performance Award ("Bessie") for her sustained achievement in performance with Mark Morris and in recognition of her "invigorating spontaneity, expansive phrasing, and robust musicality." Grant has been featured in *Time Out New York*, *Dance Magazine*, and the book *Meet the Dancers*, has appeared in PBS's *Great Performances, Live from Lincoln Center* and ITV's *The South Bank Show*, and was a subject for the photographer Annie Leibovitz. Before joining MMDG, Grant moved to New York City from her hometown of Highland Park, Illinois, and earned a B.F.A. from NYU's Tisch School of the Arts. She and her husband, David Leventhal (former MMDG dancer and current Dance for PD® Program Director), are proud parents of son Zev, born March 2012.



Andrew Janss (*cello*) has been hailed by *The New York Times* for his "glowing tone," "insightful musicianship," and "sumptuous elegance." He has been featured at Lincoln Center, the Kennedy Center, Carnegie Hall, and the Louvre Museum, and has collaborated with a long list of the world's greatest artists, including Itzhak Perlman, Pinchas Zukerman, Lynn Harrell, Leon Fleisher, Richard Goode, and members of the Emerson, Guarneri, Juilliard, and Takacs Quartets. He has performed as principal cellist of the renowned St. Paul Chamber Orchestra. From 2007 to 2010, Janss was a resident artist at the Chamber Music Society of Lincoln Center as part of CMS 2 with the Escher String Quartet, which he helped found. He has performed at the Ravinia, Music@Menlo, Santa Fe, La Jolla Summerfest, and Marlboro Music Festivals. He tours regularly across the United States with MMDG and joined the Dance Group on recent tours to the UK, Italy, and China. Janss has been invited to residencies at Notre Dame, Tulane, Virginia Commonwealth University, SUNY Stony Brook, and the University of Idaho. He worked on the set of the critically-acclaimed movie *A Late Quartet*, consulting for Christopher Walken on how to play the cello. Janss is Program Director of the Omega Ensemble in New York City.



Brain Lawson began his dance training in Toronto at Canadian Children's Dance Theatre. There, he worked with choreographers such as David Earle, Carol Anderson, and Michael Trent. Lawson spent a year studying at the Rotterdamse Dansacademie in The Netherlands and graduated *summa cum laude* in 2010 from Purchase College, where he was also granted the President's Award for his contributions to the dance program. Lawson has had the pleasure of performing with Pam Tanowitz Dance, Dance Heginbotham, and Nelly van Bommel's NØA Dance, among others. He joined MMDG as an apprentice in 2011 and became a company member in 2013.



Aaron Loux grew up in Seattle, Washington, and began dancing at the Creative Dance Center as a member of Kaleidoscope, a youth modern dance company. He began his classical training at the Cornish College Preparatory Dance Program and received his B.F.A. from The Juilliard School in 2009. He danced at The Metropolitan Opera and with Arc Dance Company before joining MMDG in 2010.



Laurel Lynch began her dance training at Petaluma School of Ballet in California. She moved to New York to attend The Juilliard School where she performed works by Robert Battle, Margie Gillis, José Limón, and Ohad Naharin. After graduation, Lynch danced for Dušan Týnek Dance Theatre, Sue Bernhard Danceworks, and Pat Catterson. Lynch joined MMDG as an apprentice in 2006 and became a company member in 2007. Many thanks to Gene and Becky.



Stacy Martorana began her dance training in Baltimore, Maryland, at the Peabody Conservatory. In 2006, she graduated from the University of North Carolina School of the Arts with a B.F.A. in Contemporary Dance. She has danced with the Amy Marshall Dance Company, the Neta Dance Company, Helen Simoneau Danse, Kazuko Hirabayashi Dance Theater, Daniel Gwartzman Dance Company, and Rashaun Mitchell. From 2009 to 2011, she was a member of the Repertory Understudy Group for the Merce Cunningham Dance Company. She joined MMDG in 2012.



Dallas McMurray, from El Cerrito, California, began dancing at age four, studying jazz, tap, and acrobatics with Katie Maltsberger and ballet with Yukiko Sakakura. He received a B.F.A. in Dance from the California Institute of the Arts. McMurray performed with the Limón Dance Company in addition to performing works by Jiří Kylián, Alonzo King, Robert Moses, and Colin Connor. McMurray performed with MMDG as an apprentice in 2006 and became a company member in 2007.



Brandon Randolph began his training with the School of Carolina Ballet Theater in Greenville, South Carolina, under the direction of Hernan Justo. At age 14, he was accepted into the South Carolina Governor's School for the Arts and Humanities, where he studied with Stanislav Issaev and Bobby Barnett. Randolph received his B.F.A. in Dance from Purchase College in 2012. There he had the opportunity to perform with Dance Heginbotham and to perform repertory by Stephen Petronio, Lar Lubovitch, Paul Taylor, and George Balanchine. Randolph began working with MMDG in 2013 and became a company member in 2014.



Nicole Sabella is originally from Clearwater, Florida, where she studied at the Academy of Ballet Arts and the Pinellas County Center for the Arts at Gibbs High School under Suzanne B. Pomerantzeff. In 2009, she graduated from the University of the Arts in Philadelphia, Pennsylvania, earning her B.F.A. in Modern Dance Performance and the “Outstanding Performance in Modern Dance” Award. She was a performer with Zane Booker’s Smoke, Lilies, and Jade Arts Initiative. Sabella first performed with MMDG in 2013 and became a company member in 2015.



George (Yegor) Shevtsov (*piano*) has been singled out for his “Mozartean elegance,” “perfect lucidity” (*The New York Times*), and “superb musicianship” (*The Miami Herald*). His recent recording of the piano music of Claude Debussy and Pierre Boulez was selected by rhapsody.com as one of the top 25 classical albums of 2013. He has appeared in concert with members of the American String Quartet, Red Light New Music, Mivos Quartet, International Contemporary Ensemble, Bang on a Can, red fish blue fish, Alarm Will Sound, Argento Ensemble, Flexible Music,

Wet Ink Ensemble, and Manhattan Sinfonietta, among others. Among the composers who have heard him perform their works are Pierre Boulez, John Luther Adams, Elliott Carter, Charles Wuorinen, Steve Reich, Louis Andriessen, and George Crumb. Shevtsov is on the faculty of the Manhattan School of Music and the MSM Precollege Division. He currently studies flamenco in the studio of Soledad Barrio. More information: yegorshevtsov.com



Billy Smith grew up in Fredericksburg, Virginia, and attended George Mason University under a full academic and dance talent scholarship. He graduated *magna cum laude* in 2007 and received achievement awards in performance, choreography, and academic endeavors. While at George Mason, he performed the works of Mark Morris, Paul Taylor, Lar Lubovitch, Doug Varone, Daniel Ezralow, Larry Keigwin, Susan Marshall, and Susan Shields. Smith’s own piece, *3-Way Stop*, was selected to open the 2006 American College Dance Festival Gala at Ohio State

University, and his original choreography for a production of *Bye Bye Birdie* garnered much critical praise. An actor as well, Smith’s regional theater credits include *Tulsa* in *Gypsy*, *Mistoffelees* in *CATS*, and *Dream Curly* in *Oklahoma!*. Smith danced with Parsons Dance from 2007 to 2010 and joined MMDG as a company member in 2010.



Nicholas Tavani (*violin*) debuted in Washington, D.C.’s Gaston Hall at the age of eight. *The Cleveland Plain Dealer* recently praised him as “an alert and sensitive artist, with beautiful tone and exquisite phrasing,” and *The Washington Post* hailed his “brilliant musicianship.” As a chamber musician, recitalist, and concerto soloist, Tavani has performed extensively in the United States and around the world. A passionate advocate of new music, Tavani has premiered and recorded several works by living composers, including Samuel Adler, Alexandra Bryant, Christopher Theofanidis, and

Dan Visconti. Tavani has served on the faculties of the George Washington University School of Music, the MasterWorks Festival, and the University of Maryland High School Music Academy, among others. He served as teaching assistant to the Juilliard Quartet at The Juilliard School, where the Aeolus Quartet was 2013-2015 Graduate Quartet in Residence. As first violinist of the Aeolus Quartet, he was a winner of the 2011 Plowman International Chamber Music Competition, the 2011 Yellow Springs Chamber Music competition, and the 2009 Coleman International Chamber Music Competition. His current season includes solo performances in Maine and New York, concertos in New York, extensive touring across the U.S. and South Korea with the Aeolus Quartet, and tours with the Mark Morris Dance Group to Israel and the U.S.



Jessica Troy (*viola*) wears a variety of freelance hats. She first performed with the MMDG Music Ensemble in 1998, and has toured with them extensively, including performances with Yo-Yo Ma across the U.S. and Japan. On baroque viola, she performs with the Sebastian Chamber Players, Trinity Baroque Orchestra, Clarion, Opera Lafayette, and has appeared with Renée Fleming on the *Late Show with David Letterman*. A member of the Orchestra of St. Luke’s, Westchester Philharmonic, and

New York City Opera Orchestra, she performs frequently with many other ensembles, including the Mostly Mozart Festival Orchestra and NOVUS NY. She has recorded for Lou Reed and Ani DiFranco, and performed on TV with Whitney Houston and on film with David Byrne. A participant at many illustrious music festivals, including Tanglewood, Spoleto, and Marlboro, she can be heard on Marlboro's 50th anniversary CD in György Kurtág's *Microludes for String Quartet*, which she prepared with the composer.



Georgy Valtchev (*violin*) has appeared as soloist, recitalist, and chamber musician throughout the United States, Europe, and Asia. Originally from Plovdiv, Bulgaria, he came to the U.S. in 1992 as a scholarship student of Dorothy Delay and Masao Kawasaki at The Juilliard School, where he ultimately earned his Bachelor and Master degrees. He has been heard as soloist with orchestras in Bangor, Baton Rouge, Boston, Chicago, Dallas, Miami, New York, New Jersey, in his native Bulgaria, and throughout Japan. Since 2011, Valtchev has been a Guest Concertmaster of the

London Philharmonic Orchestra. As a chamber musician he has appeared in New York's Carnegie Hall, Alice Tully Hall, 92nd Street Y, The Kennedy Center in Washington, D.C., Chicago's Cultural Center, the Royal Carre Theatre in Amsterdam, the Barbican Centre in London, and the Guangzhou Opera House in China. He has been featured in international music festivals such as Mostly Mozart at Lincoln Center, Beethoven Festival at Bard College, Sofia Music Weeks, Varna Summer and Appolonia in Bulgaria, and Bastad Chamber Music Festival in Sweden. Valtchev is a founding member of Bulgarian Concert Evenings in New York.



Noah Vinson is originally from Springfield, Illinois, and received his B.A. in Dance from Columbia College Chicago. He was named a "Dancer on the Rise" by *Dance Magazine* in 2009, and assisted Mark Morris in the creation of his most recent work for Houston Ballet, *The Letter V*, which premiered in May 2015. He began dancing with MMDG in 2002 and became a company member in 2004.



Jenn Weddel received her early training from Boulder Ballet Company near where she grew up in Longmont, Colorado. She holds a B.F.A. from Southern Methodist University and also studied at Boston Conservatory, Colorado University, and The Laban Center, London. Since moving to New York in 2001, Weddel has created and performed with RedWall Dance Theater, Sue Bernhard Danceworks, Vencel Dance Trio, Rocha Dance Theater, and TEA Dance Company, and with various choreographers, including Alan Danielson and Ella Ben-Aharon. Weddel performed with MMDG as an apprentice in 2006 and became a company member in 2007.



Michelle Yard was born in Brooklyn, New York. She began her professional dance training at the NYC High School of the Performing Arts and continued her studies as a scholarship student at Alvin Ailey American Dance Theater. She graduated with a B.F.A. from NYU's Tisch School of the Arts. Yard teaches Pilates as well as master classes for Access/MMDG programs. She joined MMDG in 1997. Mom, thank you.

MARK MORRIS DANCE GROUP STAFF

Artistic Director Mark Morris
Executive Director Nancy Umanoff

PRODUCTION

Technical Director: Johan Henckens
Rehearsal Director: Matthew Rose
Music Director: Colin Fowler
Lighting Supervisor: Nick Kolin
Sound Supervisor: Rory Murphy
Costume Coordinator: Stephanie Sleeper
Wardrobe Supervisor: Jennifer Perry

ADMINISTRATION

Chief Financial Officer: Elizabeth Fox
Finance Manager: Rebecca Hunt
Finance Associate: Rosalind Gaskill
General Manager: Huong Hoang
Company Manager: Jen De Santo
Administrative Assistant: Marianny Loveras
Interns: Diamond Croney, Marlie Delisfort, Julia Weber

DEVELOPMENT

Director of Development: Michelle Amador
Development Associates: Tyler Mercer, Sophie Mintz
Development Assistant: Kristen Gajdica
Development Intern: Kris Marx

MARKETING

Director of Marketing: Karyn LeSuer
Marketing & Digital Media Manager: Cortney Cleveland
Marketing Assistant: Myriam Varjacques

EDUCATION

Director of Education: Sarah Marcus
School Director: Sydnie Liggett
Education Programs Coordinator: Jennifer Dayton
School Administrator: Rachel Merry
Outreach Director: Eva Nichols
Education Interns: Naomi Johnson, Joanna Ktenge, Jessica Pearson
Dance for PD® Program Director: David Leventhal
Dance for PD® Program Coordinator: Maria Portman Kelly
Dance for PD® Interns: Ginny Mottla, Amy Motson, Pia Vinson

DANCE CENTER OPERATIONS

Operations Manager: Elise Gaugert
Facilities Manager: Mark Sacks
Rentals and Office Manager: Erica Marnell
Retail Store Manager: Janice Gerlach
Front Desk Assistants: Tyrone Bevans, Alyssa Filoramo, Jillian Greenberg, Laura Merkel
Intern: Julia Weber
Maintenance: Jose Fuentes, Andy Rivera, Jean Rosa, Arturo Velazquez

Booking Representation: Michael Mushalla (Double M Arts & Events)
Media and General Consultation Services: William Murray (Better Attitude, Inc.)
Legal Counsel: Mark Selinger (McDermott, Will & Emery)
Accountant: O'Connor Davies Munns & Dobbins, LLP
Orthopaedist: David S. Weiss, M.D. (NYU Langone Medical Center)
Physical Therapist: Marshall Hagins, P.T., Ph.D.
Hilot Therapist: Jeffrey Cohen

Thanks to Maxine Morris.

Sincerest thanks to all the dancers for their dedication, commitment,
and incalculable contribution to the work.

Additional support provided by Arnow Family Fund, The Amphion Foundation, Inc., Lily Auchincloss Foundation, Beyer Blinder Belle Architects & Planners, LLC, Billy Rose Foundation, Inc., Capezio Ballet Makers Dance Foundation, Credit Suisse, Joseph and Joan Cullman Foundation for the Arts, Inc., The Gladys Krieble Delmas Foundation, The Harkness Foundation for Dance, JP Morgan Chase, Kinder Morgan Foundation, Leatherwood Foundation, Materials for the Arts, McDermott, Will & Emery, Resnicow + Associates, Jerome Robbins Foundation, San Antonio Area Foundation, Schmeer Foundation, SingerXenos Wealth Management, Solon E. Summerfield Foundation, Tiffany & Co., and Trust for Mutual Understanding.

The Mark Morris Dance Group is a member of Dance/USA and the Downtown Brooklyn Arts Alliance.

Cargo ©2005 Discalced, Inc.
Whelm ©2015 Discalced, Inc.
Resurrection ©2002 Discalced, Inc.
The ©2015 Discalced, Inc.

For more information contact:
MARK MORRIS DANCE GROUP
3 Lafayette Avenue
Brooklyn, NY 11217-1415
(718) 624-8400

www.mmdg.org
facebook: markmorrisdancegroup
twitter: markmorrisdance
instagram: markmorrisdance
tumblr: mmdgontheroad
youtube: Mark Morris Dance Group



ARRIVE DOWNTOWN. CENTER STAGE.

Downtown-to-downtown service on the Northeast RegionalSM gets you to the heart of the city without the stress and hassles of traffic. So you can catch the opening scene without creating one.

Book 14 days in advance and save 25% or more on one-way fares from Washington, D.C. Find out more at Amtrak.com.



This offer is valid for travel on the northeast Regional train service only. Advance reservations are required a minimum of fourteen (14) days prior to travel. Once purchased, tickets are non-refundable; exchanges are permitted within the ticket validity period. Blackouts apply on the following dates: 11/24/15-11/25/15, 11/28/15-11/29/15, 12/18/15-12/20/15, and 1/1/16-1/2/16. Seating is limited; seats may not be available on all trains at all times. Fares are subject to availability. Up to 2 children ages 2-12 may accompany each adult at half the regular (full) adult rail fare. This offer is valid for Coach seats only; no upgrades permitted. This offer is not combinable with any other discount offer. In addition to the discount restrictions, this offer is also subject to any restrictions, blackouts and refund rules that apply to the type of fare purchased. Fares, routes and schedules are subject to change without notice. Once travel has begun, no changes to the itinerary are permitted. Other restrictions may apply. Amtrak and Northeast Regional are registered service marks of the National Railroad Passenger Corporation.

CELEBRATE
DANCE
AT MASON

MASON DANCE COMPANY
DANCE CELEBRATION CONCERT

MARCH 18-19, 2016 AT 8:00 PM / CONCERT HALL

PROGRAM:

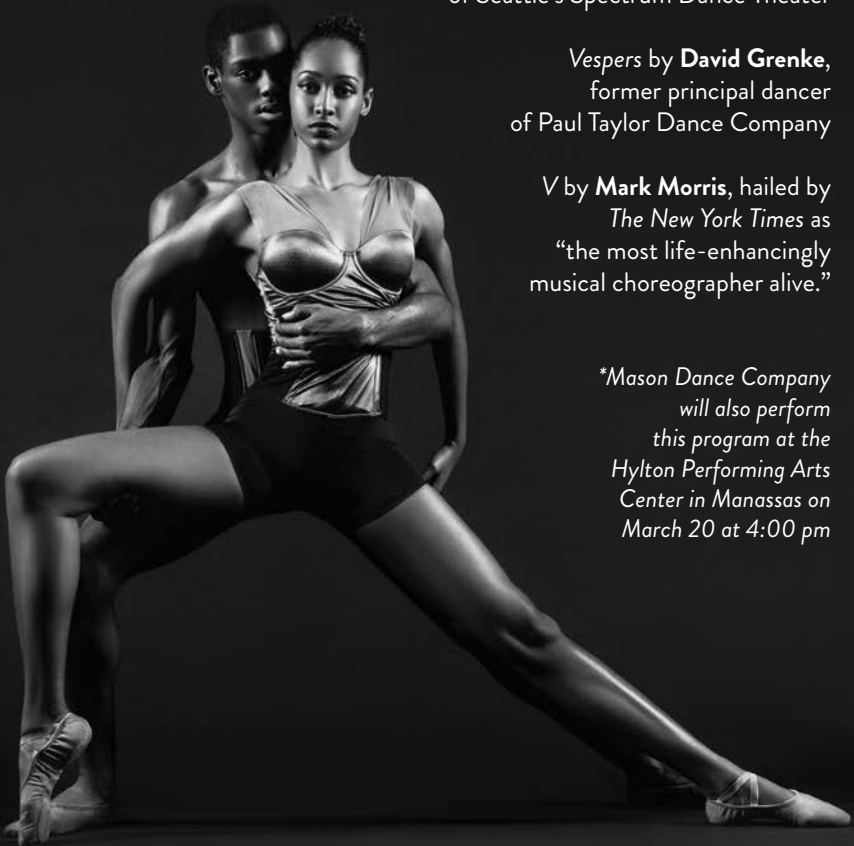
Impetere by **Nick Pupillo**, founder of
Chicago's Visceral Dance Center

Bhangra Fever by **Donald Byrd**, Artistic Director
of Seattle's Spectrum Dance Theater

Vespers by **David Grenke**,
former principal dancer
of Paul Taylor Dance Company

V by **Mark Morris**, hailed by
The New York Times as
"the most life-enhancingly
musical choreographer alive."

**Mason Dance Company
will also perform
this program at the
Hylton Performing Arts
Center in Manassas on
March 20 at 4:00 pm*



GEORGE MASON UNIVERSITY

COLLEGE OF VISUAL AND PERFORMING ARTS

CENTER FOR THE ARTS

ARTS AT MASON PARTNERSHIP BOARD

Mark Shugoll, <i>Chair</i>	Val McWhorter	EX OFFICIO MEMBERS	Lloyd Griffiths, Dance Partnership Council
Joe Catalano, <i>Vice Chair</i>	Carolyn Peterson	Shannon Baccaglino,	Barbara Jacksier, President, Friends of Music
Charlie Joyce, <i>Secretary</i>	John Paul Phaup	CVPA Alumni Chapter	Mack Miller, President, Friends of Theater
Sharon M. Gottlieb, <i>Treasurer</i>	Ida Portland	Robert Bork, Jr., Computer Game Design Advisory Board	Paulette Miller, President, Friends of the Center of the Arts
Linda Beckman	Bob Purks		
Mike Brown	Joy Quinn		
Sharon Buchanan	Manuel F. Rojas	Cleopatra Burke, Potomac Arts Academy Advisory Board	
Annie Hunt Burriss	Dr. Victoria Salmon	R. Pat Carroll, Osher Lifelong Learning Institute	
Don Conwell	John (Jed) D. Shilling	Marion Deshmukh, Chair, Faculty Arts Club	
Randall Edwards	Ilene Marie Tognini, Esq.	Jeremy Freer, Assistant Director, Athletic Bands	
Susan Fishburn	Mikki Van Wyk	Gardner Gillespie, Chair, School of Art Advisory Council	
Alice Heyer	Edward Weiner		
Ronald (Ron) J. Hubbard, AIA			
Jolanda N. Janczewski			
So Lim			
John Mason			

FRIENDS OF THE CENTER FOR THE ARTS BOARD

Paulette Miller, <i>President</i>	Gordon Canyock, <i>Secretary</i>	Evelyn Kiley	Richard Wilson
Judy Weltz, <i>Co-Vice President for Events</i>	Walt Smith, <i>Budget Officer</i>	Charles Lawson	Susanne Zumbro
Sonja Palomaki, <i>Co-Vice President for Events</i>	R. Pat Carroll	Valentina Lukin	
Joyce Grimes, <i>Vice President for Membership</i>	Louis Delair, Jr.	Merle Mulvaney	
Eloise Stinger, <i>Vice President for Communications</i>	A. J. Driscoll	Ida Portland	
	Tom Ezell	Gary Schnurpusch	
	Trish Fiser	Bob Warakomsky	
	Kay Gilbert	Joan White	
	Shirley Joyce	Maiju Wilson	

DANCE PARTNERSHIP COUNCIL

Fran Bartemes	J. Michael Brown	Donna Kidd	Carol Mattusch, Ph.D.
LuAnn Bennett	Eileen Chandhoke	Evans Mandes, Ph.D.	Victoria Salmon
Gary Bortorff	Lloyd Griffiths, Ph.D.	Patricia Mandes	

FRIENDS OF MUSIC AT MASON BOARD

Barbara Jacksier, <i>President</i>	<i>Special Events</i>	Kate Hearden	Linda Monson
Bob Warakomsky, <i>First Vice President</i>	Marty Whipple, <i>Vice President, Finance</i>	Alice Heyer	Christine Murrow
Ed Kelly, <i>Vice President, Outreach</i>	Al Miller, <i>Secretary</i>	Harriet Kaplan	Claire Saret
Kay Rongley, <i>Vice President,</i>	Jim Bennett	Juliana Kuo	
	Mike Booth	Dennis Layendecker	
		Kevin McCarthy	

FRIENDS OF THEATER AT MASON BOARD

Mack Miller, <i>President</i>	Doris Bloch, <i>Secretary</i>	<i>Outreach Chair</i>	Linda Evans
Judy Canyock, <i>Vice President</i>	Brittany Martz, <i>Alumni Rep</i>	Gerry Blais	Charles Joyce
Charles Duggan, <i>Treasurer</i>	Paulette Miller, <i>Donor</i>	Eileen Duggan	Sophy Weinroth

COMPUTER GAME DESIGN PROGRAM EXECUTIVE ADVISORY BOARD

Dave Albo	John Casey	Mark Keam	William Schrader
Craig M. Arndt	Joseph Catalano	Bradley Keelor	M. Siddique Sheikh
George Barker	C. Dan Clemente	Gerry McClure	Scott D. Simpkins
Bob Bates	Eugene Evans	Robert McCreight	Matthew Toloczko
Buddy Beck	Robert Gaudian	Tim Oriani	Jonathan Wienberger
Robert H. Bork, Jr.	Ken Harvey	Lucien Parsons	
Keith Brendley	Tim Johnson	Dave Rensin	
John Carney	Jeffrey Kazmarek	William Ridenour	

COLLEGE OF VISUAL AND PERFORMING ARTS ALUMNI CHAPTER BOARD

Shannon L. Baccaglino, <i>President</i>	Amanda G. Corrigan	Lesley C. Irmingier	Baron E. Pugh
Ryan L. Braaten	Samantha S. Courtney	Maryam Kasmai	Brian L. Smith
Eric R. Brody	Emily Flores	Deborah J. Kramer	Clinton D. Watnee
	Molly K. Grimsley	Amanda E. Loerch	Melinda E. Wildman

FACULTY ARTS CLUB

Marion Deshmukh, <i>Chair</i>	Jonathan Goldman	Julianne Mahler	Lenore J. Weitzman
James T. Bennett	Dimitri Ioannou	Laurie Meamber	
Louis D'Alessandro	Mark Jacobs	Linda Monson	
Paula Ruth Gilbert	Evans Mandes	Ariela Sofer	

SCHOOL OF ART ADVISORY COUNCIL

Barry Broadway	Juanita Hardy	Val McWhorter	Linda Sullivan
Sharon Buchanan	Melvin Hardy	Joann Moser	Peter Winant
Jessica Stafford Davis	Jim Head	Phoebe Peterson	Elyn Zimmerman
Sheryl Fiegel	Benjamin Huberman	Bill Reeder	Eugene Evans, <i>ex officio</i>
Helen Frederick	Giselle Huberman	Don Russell	Mikki Van Wyk, <i>ex officio</i>
Gardner Gillespie	Claire Huschle	Peter Stearns	

POTOMAC ARTS ACADEMY ADVISORY BOARD

Claire Allen	Donna Fleetwood	Ina Mirtcheva	Anne Sharpe
Cleopatra Burke	Susan Graziano	Kevin Murray	
Andy Bursten	Larry Kelly	Scott Nurmi	
Jenna Day	John Kilkenny	J. P. Phaup	

FILM AND VIDEO STUDIES PROGRAM ADVISORY BOARD

Eric Espejo	Jon Gann	Clara G. Kelly	Dave Ruby
Jim Folliard	Carma Hinton	Cindy Lont	Mikki Van Wyk
Simone Friedman	Joy Hughes	Erik Muendel	Lisa Zuccari

HYLTON PERFORMING ARTS CENTER EXECUTIVE BOARD

Rex Parr, <i>Chairman</i>	Carlos Castro	William Reeder	Craig Stewart
John Stirrup, <i>Vice Chairman</i>	Sean Connaughton	Marda Robillard	Mike Vanderpool
David Moore, <i>Secretary</i>	Carol Merchant Kirby	Richard Smith	Dr. Steven L. Walts
Sheyna Burt, Esq.	Angela Knight	Robert Sowell	D'Andrea Wooten
Ron Carmichael	Pat Pate	Corey Stewart	Rick Davis, <i>ex officio</i>

GEORGE MASON UNIVERSITY BOARD OF VISITORS

Tom Davis, <i>Rector</i>	Tracy Schar	David Gallay
Stuart Mendelsohn, <i>Vice Rector</i>	M. Siddique Sheikh	Larry Kerschberg
Kelly McNamara Corley, <i>Secretary</i>		Jill Nelson
Mahfuz Ahmed	FACULTY REPRESENTATIVE	Peter Pober
Karen Alcalde	Charlene Douglas	Keith Renshaw
Stephen M. Cumble		June Tangney
Kimberly O. Dennis	STUDENT REPRESENTATIVES	
Claire Dwoskin	Khushboo Bhatia	FACULTY COMMITTEE LIAISON
Anne Gruner	Justin Van Buren	Edward Douthett
John Jacquemin		
Robert F. Pence	FACULTY COMMITTEE	
David Petersen	REPRESENTATIVES	
Jon Peterson	Alan Abramson	
Shawn Purvis	David S. Anderson	

GEORGE MASON UNIVERSITY FOUNDATION BOARD OF TRUSTEES

James W. Hazel, JD '84, <i>Chairman</i>	Dennis J. Cotter, BS '80	Elavie Ndura
Janet E. Bingham, <i>President</i>	Gene L. Frogale, EMBA '08	Louise C. Nelson
George C. Newstrom, <i>Vice Chairman</i>	Benjamin H. Graham, BA '77	John T. Niehoff, BS '84
William J. Ridenour, <i>Secretary</i>	Dorothy S. Gray	Dolly C. Oberoi
Jeffery M. Johnson, BS '75, <i>Treasurer</i>	Brian J. Hays	Joseph J. O'Brien, Jr.
David A. Roe, BS '89, MBA '96, <i>Director of Real Estate and Administration</i>	Kevin Hern, MBA '05	John Paul Phaup, MBA '91
Peggy Agouris	Todd R. House, '90, MPA '03	Ali A. Saadat
Terri Cofer Beirne, BA '88	Amir Hudda	Donna P. Shafer
Deborah Boehm-Davis, PhD	Najaf Husain	Jeffrey A. Smith, BS '83
Robert E. Buchanan	Kay W. Lewis	Samuel R. Strickland
Ángel Cabrera, PhD	James A. Meriwether	Michele P. Toth
W. Jeffrey Carlton	M. Yaqub Mirza, PhD	Michael R. Waple, BS '85
James J. Consagra	John R. Muha II, BS '81	Bruce D. Wardinski
	J. D. Myers II	Daniel R. Wroting

**The College of Visual and Performing Arts expresses its sincerest gratitude to
the following donors who made generous gifts in support of our programs and students
as of January 1, 2014 – September 1, 2015**

ENDOWMENTS

The College of Visual and Performing Arts acknowledges the forward looking generosity of the following individuals and organizations that have established scholarship endowments in the college.

<i>Dr. Barry and Velma Berkey Music Scholarship Endowment</i> Dr. Barry Berkey and Mrs. Velma Berkey, 2004	<i>Joanne Johnson Dance Scholarship Endowment</i> Dr. and Mrs. George W. Johnson, 2005
<i>John S. and Judith T. Bland Memorial Scholarship Endowment (Vocal Studies)</i> Mrs. Robyn David and multiple donors, 1989	<i>Joseph M. Karyan Music Scholarship Endowment</i> Multiple Donors, 2002
<i>Dr. Sam di Bonaventura Memorial Scholarship Endowment (Strings)</i> Ms. Darlene M. Scott, 1999	<i>Howard Vincent Kurtz Theater Scholarship Endowment</i> Professor Howard Vincent Kurtz and friends, 2008
<i>Jean Carrington Cook Piano Scholarship Endowment (Piano)</i> C. Barrie Cook, M.D., 1995	<i>Kathleen A. Lieder and Lloyd C. Fell Student Scholarship Endowment in Music Performance/Vocal Studies</i> Dr. and Mrs. Alan G. Merten, 2006
<i>Lucy C. Church Scholarship Endowment (Vocal Studies)</i> Mr. and Mrs. Randolph W. Church, 2003	<i>Linda Garner Miller Scholarship Endowment (Dance)</i> Ms. Elizabeth Price and Mr. J. Michael Brown, 2002
<i>de Laski Scholarship Endowment (Music, Dance, Theater)</i> de Laski Family Foundation, 2001	<i>Dr. Linda Apple Monson Music Endowment Fund</i> Multiple Donors, 2011
<i>Fairfax Spotlight on the Arts Apple Federal Credit Union Endowed Scholarship in the Arts</i> Apple Federal Credit Union and Fairfax Spotlight on the Arts and multiple donors, 2005	<i>Nancy G. Monson Scholarship Endowment for the Visual Arts</i> Mr. Mark D. Monson, 2013
<i>Fairfax Spotlight on the Arts BP Endowed Scholarship in the Arts</i> BP and Fairfax Spotlight on the Arts and multiple donors, 2004	<i>Mildred Elaine Tetsell Parker Scholarship Endowment (Vocal Studies), 2004</i>
<i>Fairfax Spotlight on the Arts Ruth Haycock Endowed Scholarship in Piano</i> The Honorable Jane Woods and Fairfax Spotlight on the Arts and multiple donors, 2006	<i>Peterson Family Foundation Scholarship Endowment (Music)</i> Mr. and Mrs. Milton Peterson, 2000
<i>Fairfax Spotlight on the Arts Scholarships in Music for the Potomac Academy, 2004</i>	<i>Carol M. Robinson and Peter R. Barcher, Ph.D. Scholarship Endowment (Vocal Studies)</i> Peter R. Barcher, Ph.D. and multiple donors, 2015
<i>Heritage Chair in Arts and Cultural Criticism Endowment</i> Multiple Arts Gala Committee Donors, 1986	<i>Pamela A. Roe Music Scholarship Endowment (Athletic Bands)</i> David and Pamela Roe, 2008
<i>Heritage Chair in Music Endowment</i> Multiple Arts Gala Committee Donors, 1992	<i>Noah J. Seidenberg Scholarship Endowment (Art)</i> Mr. and Mrs. Gordon Seidenberg, 2006
<i>Hylton Performing Art Center Endowment</i> Multiple donors, 2006	<i>Joseph D. Shirk Memorial Music Scholarship Endowment</i> Mrs. Jean E. Shirk and multiple donors, 2000
<i>George W. Johnson Endowment and Joanne Ferris Johnson Scholarship</i> Dr. and Mrs. George W. Johnson, 1996	<i>Shirley Udelson Memorial Scholarship Endowment (Music Composition)</i> Mr. Michael E. Udelson, 1997
	<i>Wachovia Bank Arts Scholarship Endowment</i> Wachovia Foundation, 1993

**Steinway - The Next Stage for Mason
(Donors from July 1, 2013 to August 1, 2015)**

Our thanks to those who have contributed to our campaign to purchase 23 new Steinway grand pianos for the new Music/Theater Building. For information on the Steinway campaign and how you can play your part, please contact Cody Clarke at 703-993-4749 or cclarke17@gmu.edu.

Steinway Campaign Steering Committee, 2015

Mary McAuliffe, *Chair*
Karen P. Arledge
Dr. Beth Cabrera
Brian H. Marcus
Dr. Linda Monson
Dr. Victoria Salmon

Steinway Legacy Benefactors

The Beck Foundation
Dr. Ángel Cabrera and
Dr. Beth Cabrera
Sidney O. Dewberry

Mary McAuliffe
Reinsch Pierce
Family Foundation
Dr. Peter Stearns and
Ms. Donna Kidd

88 Key Circle
Susan E. Alvarado
Karen P. Arledge
Robert and Patricia Carroll
Bill and Maureen Crispin
Richard and Trish Davidson
Jerry and Anne Gruner
Edward and Kathleen Kelly

Richard and Ann Lee
David and Joanne Lynch
Brian H. Marcus
Mark and Terese McLeod
Drs. Yaqub and Tanveer Mirza
Drs. Linda and Keith Monson
Denis and Joan O'Toole
Lindy L. Paull
J. P. Phaup
Frank and Betty Quirk
John Salmon and
Dr. Victoria Salmon
Al and Mindy Sims
Robert and Patricia Warakomsky

Senator and
Mrs. John W. Warner
Dr. and Mrs. S. David Wu

Steinway Sustainers
Thomas L. Adams
Elliot and Linda Bunce
Maxine C. Champion
Randolph and Lucy Church
David Clanton and
Pamela Garvie
Dr. Thomas F. Cleary
Linda Divall
Paul and Joanne Domson
Nancy W. Duncan
Carla S. Eudy

Vincent and Clara Ferraro
Mark and
Margaret Fitzsimmons
Gardner and Stevie Gillespie
John and Marilyn Hannigan
Arnie and Debbie Havens
Sally R. Hitchcock
Bill and Jane Hoover
Henry and Kathy Jenkins
Michael Karam and
Linda Morgan
Richard and Justine Kingham
Dr. Thomas E. Lovejoy
Walter and May Lou McCormick
William and Janice Messerschmidt
Elena A. Mirtcheva

Charles and Elizabeth Monro
Susan Montague
George R. and
Mary Beth Nethercutt
Mark and JoAnn Newell
John and Pam O'Shaughnessy
Dr. and Mrs. C. Cooper Pearce III
Laurence and Karen Phillips
Edward M. Rahal
Marilyn Rahilly
Anne Chettle Reinke
Brian and Maria Smith
Dennis and Dawn Thomas
The Hon. Fred and Amey Upton
David and Patricia Vaughan
Donnan C. Wintermute

Grand Tier Society (Donors from July 1, 2013 to September 1, 2015)

Our thanks to members of the Friends of the Center for the Arts who have joined at the Grand Tier Society level with an annual gift of \$1,000+. Grand Tier Society members play a visionary and leadership role in ensuring that the season of Great Performances at Mason continues to remain vibrant and affordable today and for future generations. For more information about the Grand Tier Society, contact 703-993-8641 or fcfa@gmu.edu.

Helen and Bill Ackerman
Ronald Baker and Ruta Penkiunas
Frank and Bert Boyd
Andrew M. Bursten
Gordon and Judy Canyock
Robert P. and Patricia A. Carroll
Louis Delair, Jr.
A. J. and Joan Driscoll
Charles and Eileen Duggan
Michael and Janet Emsley
J. Thomas and Eve E. Ezell
Wendy Frieman and David E. Johnson
William and Jackie Gravell
Joyce and Gary Grimes

John Harold and Penny Rood
Jack and Arlene Hermansen
Charles and Shirley Joyce
Charles and Fae Ann Lawson
Mack and Paulette Miller
Merle L. Mulvaney
Dan Orlich
Don and Sonja Palomaki
Laura Peebles and Ellen Fingerman
Gary and Ronna Porter
Robert and Ida Portland
Jane and Larry Rockwood
Norman and Lorraine Rosenberg
Diane and Gary Schnurrpuch

Ken and Joanne Schoonover
Seeley Foundation
Scott A. and Regina R. Shaffer
Shugoll Research
Walter and Janice Smith
Dr. Peter N. Stearns and
Ms. Donna L. Kidd
Eloise C. Stinger
Patricia and Robert Warakomsky
Ed and Maria Ward
Joan R. White
Maiju and Richard Wilson
Susanne and Rod Zumbro

The Center for the Arts thanks the following corporate sponsors:

Steinway Piano Gallery - Washington, D.C.
Keyboard Conversations® Series Sponsor

Amtrak
Artist Transportation Sponsor

Marriott
Artist Accommodations Partner

ANNUAL AND SPECIAL GIFTS (January 1, 2015 to January 31, 2016)

Includes \$100+ gifts to the College of Visual and Performing Arts, Friends of the Center for the Arts, Friends of Art, Dance Partnership Council, Friends of Music at Mason, Friends of Theater at Mason, Arts Management, Green Machine Boosters, Film and Video Studies, Computer Game Design, Potomac Arts Academy, ARTS by *George!*, and the Hylton Performing Arts Center.

\$1,000,000+
Peterson Family Foundation

Dr. Peter N. Stearns and
Ms. Donna L. Kidd

Ms. Kate Cullen
Mr. Emanuel J. Friedman and
Ms. Kindy French

\$100,000-\$999,999
Novant Health Inc.

\$10,000-\$24,999
Ms. Patricia A. Albrite and
Mr. Skip Albrite

Mr. Harry S. Ghadban and
Mrs. Barbara Ghadban

\$25,000-\$99,999
Dr. Peter R. Barcher
The Beck Foundation
John O. Gregory

Apple FCU Education Foundation
Azalea Charities, Inc.
Dr. and Mrs. Barry Berkey
Drs. Angel and Beth Cabrera

Inforeliance Corporation
William T. Kiley, Ph.D. and
Mrs. Evelyn Mary Kiley
Mr. Barry Lotenberg and
Mrs. Lynne Lotenberg

Seely Foundation
United Bank
Wall Foundation
Bob and Pat Warakomsky
Norma Zimdahl

\$5,000-\$9,999

Susan J. Aitel and Jonathan Goldman
Dr. and Mrs. James T. Bennett
Andrew M. Bursten
City of Manassas
Compton and Duling, L.C.
Didlake, Inc.
Dominion Resources Inc.
Anna and Randall Edwards
Fairfax Law Foundation
Mr. Robert C. Faske
Mr. Bob Gallagher
Mr. Gardner F. Gillespie III and
Mrs. Antonia V. Gillespie
Mark and Sharon Gottlieb
Mr. Michael B. Gross
Giselle and Ben Huberman
Dr. Joy Hughes and Mr. Kenneth Lee
The Jacquemin Family
Foundation Inc
Mr. John M. Jacquemin and
Mrs. Tracie A. Jacquemin
Dr. and Mrs. George and
Joanne Johnson
Carol Merchant Kirby and
Peter Kirby
Russell and Jennifer Lamb
Ms. Mary E. McAuliffe
Kathleen McKay
Mr. Val S. McWhorter
Micron Technology
Foundation, Inc.
NOVEC
N.V.P. Inc.
Mr. Rexford G. Parr, Jr. and
Mrs. Mary R. Parr
Charles and Roberta Paturick
The Pence Group
Mrs. Susan S. Pence and
Mr. Robert F. Pence
Mr. John Paul Phaup
Robert K. Purks
Mr. and Mrs. William Reeder
Richard W. Averill Foundation
Richmond Times Dispatch
Sandy Spring Bank
Sun Design Remodeling Specialists
Ms. Rosamond P. Tompkins and
Mr. John H. Foote
Vanguard Charitable
Endowment Program
Mikki Van Wyk
Mr. Marion M. Wall
Ed and Maria Ward
Wegmans Food Markets
Dr. Stephen E. Weinroth and
Mrs. Sophy P. Weinroth
Youth for Tomorrow
Mrs. Lisa M. Zuccari and
Mr. Alan J. Zuccari

\$2,500-\$4,999
Helen and Bill Ackerman
Mr. Mahfuz Ahmed
Alcalde & Fay

Mr. Hector Alcalde and
Mrs. Karen E. Alcalde
American Endowment Foundation
AMTRAK
Mr. Clayton M. Austin
BAE Systems, Inc.
Ms. Mary F. Bartemes
Mrs. Linda L. Beckman
Ms. LuAnn L. Bennett
Bitar Cosmetic Surgery Institute
George J. Bitar, M.D. and
Mrs. Rima K. Bitar
Frank and Bert Boyd
Michael Brown and Elizabeth Price
Mr. Reginald J. Brown and
Ms. Tiffany F. Sanchez
Mr. Robert E. Buchanan and
Mrs. Sharon B. Buchanan
Gordon and Judy Canyock
Randolph and Lucy Church
Mrs. Kathryn McNamara Corley and
Mr. John M. Corley
Country Club of Fairfax
Mr. J. Haydn Davis, Jr. and
Mrs. Patricia M. Davis
Dr. Rick Davis and Ms. Julie
Thompson
The Hon. Thomas M. Davis III and
The Hon. J. Devolites Davis
Louis Delair, Jr.
Marion and Ashok Deshmukh
Mr. Steve Dixon
Charles and Eileen Duggan
A. J. Dvoskin and Associates, Inc.
Albert and Claire Dvoskin
Ms. Heather A. Ehrheart-Guck and
Mr. David Guck
Tom and Eve Ezell
Fairfax Spotlight on the Arts, Inc.
The Fauquier Bank
Gilbane Development Company
Greater Manassas Christmas Parade
Lloyd Griffiths and Arlene Page
Joyce and Gary Grimes
Barbara Jacksier and Everett Chasen
Charles and Shirley Joyce
Ms. Eileen E. Kennedy
Mrs. Justine M. Kingham and
Mr. Richard Kingham
Charles and Fae Ann Lawson
Dr. Dennis M. Layendecker and
Mrs. Myriam Layendecker
Mark and Sojung Lim-Hardy
Lockheed Martin Corporation
Mrs. Patricia A. Long and
Mr. Maurice Long
Thomas and Pamela Maskey
Mrs. Andrea S. McAleese
McAleese & Associates, P.C.
Dr. Alan Merten and
Mrs. Sally Merten
Mack and Paulette Miller
Ms. Deborah G. Milligan
Ms. Una M. Murphy and
Mr. Stephen P. Levenson
Odin, Feldman and Pittleman, PC
The Hon. Harry J. Parrish II and
Mrs. Cheryl S. Parrish
Robert and Ida Portland
Ms. Mary Postma
The Presser Foundation

The Prince William County Bar
Foundation
Ms. Joy Quinn and Mr. Terry Quinn
Jim and Sharon Reynolds
Mr. William J. Ridenour and
Mrs. Sara D. Ridenour
Dr. Victoria N. Salmon and
Mr. John J. Salmon
Ms. Carole J. Scott
Sentara Healthcare
Mr. Kenneth M. Shepherd and
Mrs. Patricia E. Shepherd
Mary and Jerry Sherman
Mark and Merrill Shugoll
Smith, Pachter, McWhorter PLC
Mr. Richard H. Smith and
Ms. Catherine R. Grant
Steinway Piano Gallery of D.C.
Mrs. Anita K. Sullivan and
Mr. Patrick A. Sullivan
Transurban - Fluor
Mr. Patrick R. Tribe and
Ms. Marda J. Robillard
Vanderpool, Frostick & Nishanian
Verizon Foundation
Mrs. Ann B. Wheeler and
Mr. John M. Wheeler
Susanne and Rod Zumbro

\$1,000-\$2,499

Mr. Robert B. Anderson III
Apple Federal Credit Union
ART + Specialists, LC
Associated Distributors
Mr. John M. Atkinson and
Mrs. Debra L. Atkinson
Ronald Baker and Ruta Penkiunas
Mrs. Deborah D. Barnard and
Mr. Barry M. Barnard
Bob and Terry Barnes
Mrs. Penny M. Barrows and
Mr. John Barrows
Mr. Herbert Bilewski
Dianne and Gerard Blais
Blue Mountain Band Association
Blues Alley Jazz LLC
Boeing Company
Mr. Darold Brinley and
Mrs. Stephanie Brinley
Brion's Grille
Bill Brogdon
Buchanan Partners, LLC
Mr. Craig Campesi and
Mrs. Kris Campesi
Dr. Mark Camphouse and
Ms. Elizabeth Curtis
Pat and Pat Carroll
Mr. and Mrs. Joseph P. Catalano
Cho Benn Holback + Associates
Mrs. Deborah M. Chusmir and
Mr. Michael Chusmir
City of Fairfax Foundation for
the Arts
Mr. Ronald S. Clark and
Mrs. Deborah A. Clark
The Honorable Gwen Cody
Mrs. Jocelyne Colao and
Mr. Joseph Colao
Mr. and Mrs. Donald J. Conwell
Mrs. Marjorie Cooke and
Mr. David Cooke

Jose M. Cortina, Ph.D. and
 Kimberly K. Eby, Ph.D.
 Mr. Donald E. Coulter and
 Ms. Rosemary Enright
 Coulter, Dove & Harris
 Mrs. Margaret G. Covington
 Lt. Gen. Stewart E. Cranston, Ret.
 and Mrs. Margaret Cranston
 Bob and Linda Crites
 Ms. Jennifer W. Davis and
 Mr. Jeff Davis
 Ms. Jessica M. Davis
 Mrs. Megan M. Davis and
 Mr. James H. Davis
 Ms. Brenda S. Devine
 Devine Family Foundation
 Ms. Alison S. Dixon and
 Mr. Michael C. Dixon
 Ms. Vandy S. Dixon
 The Dow Chemical Foundation
 A. J. and Joan Driscoll
 Mary A. Duckett
 Michael and Janet Emsley
 Fairfax Cable Access Corp
 Peter and Lenore Farrell
 Mr. John Farris and Ms. Sue Farris
 Ms. Sheryl Fiegel
 William and Patricia Fiser
 Mr. Robert S. Fisher and
 Mrs. Dale L. Fisher
 Mr. and Mrs. Andrew Flagel
 Art and Linda Foster
 Mr. P. Wesley Foster, Jr. and
 Mrs. Betty Foster
 Wendy Frieman and
 David E. Johnson
 Mr. Gene L. Frogale and
 Mrs. Ellen Frogale
 Mrs. Suzanne E. Gaffney and
 Mr. Edward J. Gaffney
 Mrs. Cynthia G. Garn
 Harry and Barbara Gerber
 Mr. Craig S. Gerhart and
 Ms. Martha Z. Reinhart
 Grammy Foundation
 Mr. William Gravell and
 Mrs. Jacqueline A. Gravell
 Art and Linda Hamerschlag
 Grayson P. Hanes and Betty N. Hanes
 John Hanks
 Anne and Til Hazel
 Mr. Glenn A. Hemer and
 Mrs. Mary Beth Hemer
 Jack and Arlene Hermansen
 Samuel A. Hill, Ph.D. and
 Mrs. Lillian Hill
 Mr. Richard E. Hineman
 Mr. George Holback
 Mr. James C. Hughes
 Jolanda N. Janczewski, Ph.D. and
 Mr. C. J. McAllister
 John Marshall Bank
 R. Christian Jones
 Mr. Hamid Kasmai and
 Mrs. Maryam Kasmai
 Ms. Alice Katz
 Mrs. Clara G. Kelly and
 Mr. John J. Kelly
 Edward T. and Kathleen G. Kelly
 Mr. George Koleszar and
 Mrs. Irene Koleszar
 Connie and Paul Kyle
 Ms. Mollie Lane
 Ms. Katherine Largent and
 Mr. Peter Dickinson
 Christopher J. Leet, M.D. and
 Mrs. Caroline Leet
 Mr. John T. Lewis
 Brian and Laurie Lindberg
 Harold and Nadyne Linton
 Long & Foster Real Estate, Inc.
 Mr. Dale F. Loy and
 Mrs. Mary Jane Loy
 Anthony and Susan Maiello
 Patricia and Evans Mandes
 Brian H. Marcus
 John and Jeanette Mason
 Mr. James F. Mast and
 Mrs. Betty Mast
 Mrs. Sheridan D. McGlothlin and
 Mr. Leon McGlothlin
 Mrs. Nancy Z. McGrath and
 Mr. Kevin E. McGrath
 John and Margaret McMichael
 Rita and Dennis Meyer
 Linda and Phillip Miller
 Drs. Keith and Linda Apple Monson
 Mr. David B. Moore
 Mr. Merle L. Mulvaney
 Nationwide Insurance Foundation
 Lt. Gen. and Mrs. Michael A. Nelson
 Northern Virginia
 Community College
 Mr. Howard R. Norton III and
 Mrs. Patsy T. Norton
 NVCC Educational Foundation, Inc.
 Ms. Margaret V. J. O'Grady
 Mrs. Paula M. Olejarz and
 Mr. Michael H. Olejarz, Jr.
 Mr. P. Daniel Orlich
 Don and Sonja Palomaki
 Charles and Bobby Paturick
 Laura H. Peebles
 Mr. Chuck Pena
 Mr. Gary Porter and
 Mrs. Ronna Porter
 Mr. Gary Rappaport
 Rappaport Management Co
 Ron and Margie Register
 Ms. Eileen Roberts
 Jane and Larry Rockwood
 Ray and Kay Rongley
 Penny Rood and John Harold
 Norman and Lorraine Rosenberg
 Ms. Roberta Ong Roumel
 Mr. David W. Ruxer
 Dr. Mary E. Schmidt and
 Dr. Russell C. Libby
 Diane and Gary Schnurrpusch
 Sir Kenneth and
 Lady Joanne Schoonover
 Mr. and Mrs. Gordon Seidenberg
 Sheron and Richard Seraydarian
 Scott and Regina Shaffer
 Mr. M. Siddique Sheikh and
 Mrs. Nassreen Siddique Sheikh
 Dr. John D. Shilling
 Shugoll Research
 Kathleen and George Shultz
 Al and Mindy Sims
 Mr. Joseph Smart
 Glenn E. Smith, D.Music
 Mrs. Judith J. Smith and
 Mr. Donald D. Smith, Jr.
 Walter and Janice Smith
 Paul T. M. So, Ph.D.
 Mrs. Susan E. Soza
 Mr. Jay Speer and Mr. Donn Smith
 Mr. G. Craig Stewart III and
 Mrs. Christine Stewart
 Eloise C. Stinger
 The Hon. John T. Stirrup, Jr. and
 Mrs. Heidi Stirrup
 Mr. Leo F. Stoltz and
 Mrs. Linda Stoltz
 Annabelle and David Stone
 Mr. David A. Strand and
 Mrs. Kimberly H. Strand
 Mr. Brian D. Sumser
 Ms. Patricia Thomas and
 Mr. Terry Aldridge
 Dr. Sharon W. Tiffany
 Nina and John Touns
 Tysons Corner Center
 Roy and Margaret Wagner
 Walsh Colucci Lubeley Walsh PC
 Mr. Robert D. Walters II
 Mrs. Janice D. Ward and
 Mr. Michael R. Ward
 Mr. Bruce D. Wardinski
 Wells Fargo Foundation
 Judith and Allen Weltz
 Mr. Thomas E. Wheeler and
 Mrs. Carol M. Wheeler
 Mr. Douglas J. Whipple and
 Mrs. Gabriella Whipple
 Dr. and Mrs. George Whipple
 Mrs. Durie N. White and
 Mr. Donald L. White
 Joan R. White
 Frank J. Whittington, Ph.D. and
 Mrs. Joy Whittington
 Maiju and Dick Wilson
 Ms. Patrice M. Winter
 Mr. Donald Workman
 Mr. Ed Wright and
 Mrs. Stephanie Wright
 Mrs. Nancy Zacharczyk and
 Mr. Thomas Zacharczyk
\$500-\$999
 Mr. Donald G. Akers and
 Mrs. Diana G. Akers
 Mrs. Mary Aldacushion and
 Mr. William A. Aldacushion
 Mr. Steven Alloy and
 Ms. Marjorie Alloy
 American Youth
 Philharmonic Orchestra
 America's Charities
 Mrs. Kathleen M. Bailey and
 Mr. Melvin D. Bailey
 Mr. Fred N. Baillie and
 Mrs. Karen K. Baillie
 Jean and Michael Barry
 Sandy and Bob Batal
 Mr. Daniel C. Beck
 Mr. Marty Bell and Mrs. Sheryl Bell
 Steve Bershader and Maggie Godbold
 Mr. John A. Blanchette
 Michael and Christine Booth
 Mr. Gary Bottorff and
 Mrs. Pat Bottorff

Mr. Travis C. Bowen and
 Ms. Laurie E. Cunningham
 Mrs. Jane E. Brewster and
 Mr. Chris Brewster
 Mrs. Lori Brian and Mr. Peter Brian
 Ms. Judith T. Bridges
 Ms. Jocelyn West Brittin
 Mr. Thomas G. Calhoun and
 Mrs. Joy Calhoun
 Ms. Jean Callahan
 Ms. Julie Cambra
 Capitol Symphonic Youth Orchestras
 Cardinal Financial Corporation
 Carney Labs, LLC
 Joe and Lyn Castiglia
 Mr. Carlos A. Castro and
 Mrs. Gladis Castro
 Chevy Chase Trust
 Mr. George I. Cintron
 The Hon. Charles J. Colgan and
 Mrs. Carmen A. Colgan
 Ms. Lisa R. Colgan
 Mr. Patrick S. Colgan and
 Mrs. Cydney Colgan
 Sandra Cummins-Haid and
 Allen Haid
 Louis and Patricia D'Alessandro
 Mr. George D. Darnell and
 Mrs. Michelle Darnell
 Mr. Wayne L. Davis and
 Mrs. Mary Louise Davis
 Raegan and Alick Dearie
 Charles and Connie Delaplane
 Ms. Kimberly O. Dennis
 Cathy and Joe Dettmar
 John and Joyce DeVoll
 Mr. Edgar Dobie and
 Mrs. Tracy Dobie
 David and Patricia Farrell Donahue
 Equinox Investments, LLC
 Ms. Carolyn Eskew
 Mrs. Rita A. Evans
 Mrs. Kathleen M. Ferguson and
 Mr. John H. Ferguson
 Mrs. Clara Ferraro and
 Mr. Vincent Ferraro
 Mrs. Mary C. Finnigan and
 Mr. Patrick E. Finnigan
 Sandy Fletcher
 Mr. William J. Forster
 John and Linda Francis
 M. Jane Gabbay
 Mr. Dale Gaddy and
 Mrs. Jeannie Gaddy
 Ms. Leanna C. Giancarlo and
 Mr. Joseph J. Magalski, Jr
 Kay and John Gilbert
 Mr. Michael J. Gogoel and
 Mrs. Mary K. Gogoel
 Mrs. Anne C. Gruner and
 Mr. Jerry Gruner
 Robert and Ruth Hadley
 Robert and Ellen Haffa
 Ms. Tiarnna Hamilton-Sanchez
 Mel and Juanita Boyd Hardy
 Roy and Charlotte Harrell
 George and K. Lenore Hart
 Ms. Pamela Harvey and
 Mr. Paul W. Sullivan
 James W. and Sarah D. Hazel
 Mr. John B. Henry
 Fred and Alice Heyer
 Ms. Sara K. Hoffman
 Mrs. Galit G. Holtslag and
 Mr. Conrad Holtslag
 Joan and Bill Honore
 Mrs. Jamie K. Howes and
 Mr. Stephen R. Howes
 Mr. Mark Hrozcencik and
 Mrs. Christy Hrozcencik
 Mrs. Elizabeth H. Huffman and
 Mr. Robert K. Huffman
 IBM International Foundation
 Ms. Nancy Hersch Ingram
 Mrs. Carla J. Jaranson and
 Mr. Mel R. Jaranson
 Mr. Mark W. Jessop and
 Mrs. Regina N. Jessop
 Ms. Jule Jewell
 Ms. Jean Kellogg
 Donna and Bill Kerivan
 Larry and Barbara King
 Mr. James Klein and
 Mrs. Giovanni M. Klein
 Phyllis and Fred Krochmal
 Juliana and Howard Kuo
 Mr. Bruce E. Kutz
 Jennifer J. Lapple, Ph.D.
 Ms. Marthe M. Latinville-Pace
 Mrs. Jennifer E. S. Lee and
 Mr. Donald Lee
 Sheldon and Deby Levi
 Canice K Levin
 Susan and Andre L'Heureux
 Mr. Steele Lipe and
 Ms. Patricia Daly-Lipe
 Dr. Andrew G. Loerch and
 Ms. Claire S. Loerch
 Sandra and John Long
 Ms. Barbara R. Lubar
 Mr. Eric J. Malloy and
 Mrs. Donna Malloy
 M. J. Colgan Associates LLC
 Manassas Ballet Theatre
 Mr. James Mangi and
 Ms. Kathleen Schmidt
 Mrs. Nancy L. Mangione and
 Mr. Peter T. Mangione
 Mr. Kenneth Marcus and
 Ms. Stephanie Marcus
 Mr. Robert L. Marsh and
 Mrs. Kathleen Marsh
 Dr. Carol C. Mattusch and
 Dr. Richard S. Mason
 Lawrence and Priscilla McAndrews
 Mr. Edward P. McGovern and
 Mrs. Gina McGovern
 Mr. Gregory D. McNelly
 The Hon. Stuart Mendelsohn and
 Mrs. Laura Mendelsohn
 Kathleen and Charles Meyer
 Mr. Charles S. Mills, Jr. and
 Mrs. Caroline Mills
 Dr. and Mrs. Kent Minichiello
 Jim and Diane Murphy
 Ms. Catherine A. Nelson
 Mr. Gerardo Nepomuceno
 Jim and Alice Noone
 Mrs. Mia K. Norton
 Ms. Christine M. O'Hare
 Mr. Vincent J. Oppido
 Pamela Harvey Interiors
 Ms. Sharon E. Pandak and
 Mr. Robert M. Ross
 Mr. David Paulsen
 Mr. Scott C. Plein and
 Mrs. Ingrid Plein
 Mr. Edward W. Pratt, Jr. and
 Mrs. Marilyn W. Pratt
 Mrs. Ann E. Pucci and
 Mr. John J. Pucci
 Mrs. Dawn R. Reagan and
 Mr. Doyle Reagan
 Mrs. Joan C. Reilly and
 Mr. Patrick J. Reilly
 John and Mary Rephlo
 Mrs. Diane L. Riffer
 Ms. Jennifer W. Robinson
 Mr. Jacob T. Rodman
 John F. Sacco, Ph.D.
 Ms. Catherine C. Saret
 Ms. Lenore A. Seliger
 Mrs. Marjan S. Shallal and
 Mr. Andy A. Shallal
 Mrs. Peggy Shiffrin and
 Mr. David Shiffrin
 The Shiloh Foundation
 Mr. Eugene L. Shugoll and
 Mrs. Joan Shugoll
 Mr. Thomas C. Smith
 Specialized Personnel Locators, LLC
 Sylvia J. Spengler
 Page D. Styles
 Ms. Martha R. Sullivan
 Michael and Clare Syngé
 Ms. Pauline Thompson
 Jasmine K. Tiner
 Todos, Inc.
 Richard D. Travers, M.D. and
 Mrs. Wenda K. Travers
 Rhonda and Michael Troutman
 Ernie and Diane Wakeham
 Mr. James E. Wakeley and
 Mrs. Lisa M. Wakeley
 Mr. William H. Washington and
 Mrs. Joyce Washington
 Ms. Alice L. Watts
 Robert D. Willis, D.D.S.
 Adam J. Winsler, Ph.D.
 Women in Technology
 Education Foundation
 Mr. Mark J. Yeager and
 Mrs. Margaret Yeager
 Francine F. York and Janet C. Dwire
 Mr. Ed Zakreski

\$250-\$499

Ms. Judith Andrews Agard
 Barbara and Peter Alberse
 Ms. Anne de Laiglesia Anderson
 Mr. Jesus Andino-Aquino
 Raymond and Nanette Audez
 Ms. Gloria A. Austring and
 Mr. Don Austring
 Dr. Sylvia C. Auton and
 Mr. Forrest Hanvey
 Mrs. Shannon L. Baccaglioni and
 Mr. Michael Baccaglioni
 Mr. Stephen A. Bamberger and
 Mrs. Allyn Bamberger

Mr. and Mrs. Bob Barnes
 Scott and Peg Bauer
 Ms. Pamela K. Beck
 Dr. William L. Bekenstein and
 Mrs. Fern Y. Bekenstein
 Bennett, Atkinson & Associates, P.C.
 Mr. Walter S. Bernhardt and
 Mrs. Cathi Bernhardt
 Bias Recording Company, Inc.
 Mr. Judson L. Bireley and
 Mrs. Nancy Bireley
 Mr. and Mrs. James A. Bland
 Doris Bloch and Bill Hunt
 Thomas Block
 Shirley and Dennis Bloomquist
 Mrs. Gail A. Bohan and
 Mr. David Bohan
 Ms. Gale Ann Bowers
 Ms. Dianne Boyle and
 Mr. John Boyle
 Ms. Mary Jane Brickach and
 Mr. Eugene A. Brickach
 Mr. and Mrs. Barry J. Broadway
 Howe and Margaret Brown
 Robert E. Brown
 Ms. Willa Jane Brown
 Ms. Janice Buller
 Dr. and Mrs. William A. Burston
 Rosemary and Earl Burton
 Ellen Campbell, M.D.
 Mrs. Anne S. Caputo
 Charles and Annetta Cheek
 Mr. Norman Cherkis and
 Mrs. Beverly Cherkis
 Louis and Gail Chmura
 Mrs. Roberta H. Clark and
 Mr. Robert G. Clark
 Ms. Susan A. Collins
 Ms. Paula B. Compton
 Mrs. Anne C. Cook
 Peter and Nancy Coughlan
 Clayton L. and Michelle T. Cowart
 Janice Crawford
 Mary Crawford
 Mrs. Kimberly G. Crump
 Ms. Linda D. Decker
 Ms. Joanne D. DeMarco
 Mr. Harry B. Dietrich and
 Mrs. Carol M. Dietrich
 Mrs. Donna M. DiRicco and
 Mr. Lawrence A. DiRicco
 Ms. Jennifer L. Disano
 Mr. Larry Dolph
 Evy and Ken Duff
 Mr. James N. Duff
 Fleur Duggan and Bill Brown
 Mr. and Mrs. Grover L. Dunn
 Sally Wallace and James Dunphy
 Nancy and Richard Ehlke
 Mr. Greg Ellis and Mrs. Miriam Ellis
 Ms. Linda S. Evans
 Mrs. Ellen R. Feerst and
 Mr. Phillip A. Feerst
 Jacqueline Fernandez and
 Stephen Ritter
 Mrs. Elizabeth Fini and
 Mr. Robert Fini
 Peter Friedman and Beth Liebmann
 Friends of Jackson Miller
 Ms. Deborah Gandy
 Linda and Shelly Gersten

Mr. and Mrs. Charles L. Gholz
 Ms. Susan D. Gilbert
 Bennett and Sheila Gold
 Helaine and Bob Golden
 James Golden
 Mr. William R. Goldsmith, Jr. and
 Mrs. Lorraine D. Goldsmith
 Kenneth and Helen Goodrum
 Ms. Lynn S. Gramzow
 Ms. Judy Grill
 Dr. Stanley S. Gryskiewicz and
 Dr. Nur Gryskiewicz
 Mr. John P. Grzejka and
 Mrs. Erna Grzejka
 Dave and Rita Gustin
 Wilma Hallock
 Linda and Harlan Harber
 Hard Times Cafe
 Dr. and Mrs. Dwight H. Harrison
 Tim and Ruth Hassell
 Carol and Roger Haverfield
 Georgiana Havill
 Mrs. Lynne Hobbs and
 Mr. Daniel Hobbs
 Mr. Jay P. Hochstaine
 Allan and Karla Hoffman
 Andrew M. Horowitz
 Roxane H. Hughes
 Mr. Bill Johnston and
 Mrs. Barbara E. Johnston
 Craig and Joyce Johnston
 Mr. David R. Kalagher and
 Mrs. Melissa Kalagher
 Mr. Rodney V. Kastруп and
 Mrs. Nancy A. Kastруп
 Robert Kelberg and
 Gertrude Sherman
 General and Mrs. Michael C. Kerby
 Idacaire and Thomas Kerwin
 Mr. Stephen Kitchen
 Mr. Ronald Knecht
 Ms. Linda R. Knieriem
 Mrs. Carolyn Kriebel and
 Mr. Bert Kriebel
 Peter and Patricia Kuch
 Barbara and Richard Lanterman
 Mrs. Nhungha T. Lee
 Mr. Richard P. Lee and
 Mrs. Susan Lee
 Mr. William Lidell and
 Mrs. Barbara Lidell
 Robert and Ann Lingo
 Mrs. Denise Lippuner and
 Mr. Werner Lippuner
 Mr. Matthew M. Lopez
 Randolph and Ellen Lytton
 Mr. Gregory Mason and
 Mrs. Sherry Mason
 Massachusetts Mutual Life
 Insurance Company
 Mrs. Liliana Mathy
 Mr. Robert M. McCormick
 Dr. W. Gary McGuire and
 Mrs. Bernadette McGuire
 Dr. Edward L. Menning
 Patricia Mertens and
 Brien Benson
 Mrs. Emily A. Mickelwait and
 Mr. Steven A. Mickelwait
 Dr. and Mrs. Albert R. Miller
 Mr. Jack F. Miller

The Hon. Jackson H. Miller and
 Mrs. Suzanne Davis Miller
 Mr. James H. Miller and
 Mr. R. Ben Bernstein
 Ms. Elizabeth R. Monro
 Mr. Mark D. Monson
 M. Elizabeth Moore
 Mr. Robert Moore and
 Mrs. Amy Moore
 Julia Morelli and Dan Rainey
 Ms. Sharon K. Moser
 Jackie and Tom Mosher
 James and Dorian Mroz
 Music Celebrations International
 Herbert and Jane Myers
 Mr. Robert E. Nakles
 Mr. John M. Nannes and
 Mrs. Carole T. Nannes
 Mr. Tom Neel and Mrs. Linda Neel
 Ms. Susan Merritt Nelsen
 Ms. Doris N. Newcomb
 Linda and Charles O'Connor
 Mrs. Loretta J. O'Connor and
 Mr. William J. O'Connor
 Joyce and Bernard Oppel
 Mrs. Roswitha Paletzki and
 Mr. Heinz T. Paletzki
 Mr. George L. Parker and
 Mrs. Susan Parker
 Lt. Col. Mary Jane Parrish, Ret.
 Mr. William P. Pate and
 Mrs. Sandra Pate
 Almuth and Brian Payne
 Ms. Melissa S. Peacor and
 Mr. Grant Peacor
 James T. Peeler
 Mrs. Mary S. Petersen
 Frank A. Pettrone, M.D. and
 Mrs. Claire F. Pettrone
 Mrs. Gail P. Petty and
 Mr. Robert L. Petty
 Bruce and Kay Phinney
 Mrs. Nancy S. Pickens and
 Mr. James G. Pickens, Jr.
 Mr. David E. Pickeral and
 Mrs. Oxana Pickeral
 Mark and Cheryl Piper
 Alice and Michael Plett
 Bill and Anne Poad
 Mrs. Barbara Powderly and
 Mr. Craig Powderly
 Frank and Mary Presta
 Ms. Songcha K. Putz
 Mrs. Shirley B. Rice and
 Mr. John Rice
 John Phillip Rivers
 Mrs. Lynn V. Robb and
 Mr. Curtis Robb
 Mr. Wayne Roberts and
 Ms. Stella Roberts
 Mr. and Mrs. Edward J. Roman
 Madelyn Ross and Spencer Griffith
 Mr. George Rudy and
 Mrs. Sarah Rudy
 Col. Jack Rugh, Ret. and Zaiton Rugh
 Dr. and Mrs. Barry Saffran
 Ms. Kathleen B. Santos
 Mr. Brian C. Saxe and
 Mrs. Loretta Robertson Saxe
 Mr. Joel J. Scannell and
 Mrs. Alexandra Scannell

Karen and Christopher Scheer
Daniel and Jennifer Schimpf
Dr. John Schmeelk
Dr. James C. Schornick, Jr. and
Ms. Judith A. Schornick
Mr. Edward B. Scott and
Mrs. Theresa Scott
Anne and Barry Sharp
Mrs. Jennifer C. Shelton and
Mr. V. Reid Shelton, Jr.
Mrs. Roma Sherman and
Mr. John Sherman
Mr. Richard L. Skolnik and
Mrs. Sophia Skolnik
Mrs. Margaret S. Smith and
Mr. Ethan W. Smith
Dorothy Staebler
Stone Family Trust
Mr. and Mrs. Bill Sturm
Mrs. Marion A. Taylor and
Mr. Joshua Taylor, Jr.
Mr. John Theon
Ms. Barbara J. Tobias
Ms. Linda Travis-Plato
Edna Mae and John Trevey
Brian and Inia Tunstall
Ms. Charlotte J. Vedeler
Olmedo and Elsa Villavicencio
Mr. Donald Walker and
Mrs. Cheryl M. Walker
Hae-ran and Don Q. Washington
The Hon. Jonathan L. Way and
Mrs. Shirley D. Way
Enid W. Weber
Serene and Mark Werblood
Ms. Janet M. Wheatcraft
Mr. Richard M. Wiermanski
The Winston-Salem Foundation
Ms. Denise M. Womble and
Mr. Brian Womble
Debi and Paul Wurdack
Alan and Sue Yates
Mr. Bruce G. Zatkowsky and
Mrs. Jane Zatkowsky

\$100-\$249
29 Diner
Mr. Stephen Ackley and
Ms. Adriane M. Ackley
John and Toni Acton
Nancy Adams
Mr. William J. Adams
Florence Adler
Ms. Sondra L. Ahalt
A La Carte Catering & Event Design
Mrs. Robin M. Albrecht and
Mr. Scott M. Albrecht
Alfred and Betty Alby
Charles F. Allen, M.D. and
Mrs. Gisela Allen
Dr. and Mrs. Robert Allen
Michael B. Amowitz
Ms. Sara B. Anderson
Mr. A. Roger Anzzolin and
Mrs. Karla J. Anzzolin
Jane and Carlos Arancibia
Mr. Thomas P. Armstrong and
Mrs. Laurie Armstrong
Nick and Cindy Atiyeh
Mr. Sean P. Attebury
Ron and Ann Bachand

Mrs. Deborah B. Bacigalupo and
Mr. Thomas Bacigalupo
Philip and Mary Jo Baedecker
Mr. Adheer Bahulkar
Ms. Willa C. Bailey
Kile Baker and Robert Smith
Mr. Mikhail I. Balachov
Ms. Debra A. Baptist
Jonathan and Anne Barber
Ms. Linda J. Barbour and
Mr. David A. Houser
Rick Barry and Linda Cox
Arvydas and Daiva Barzdukas
The Hon. Sheryl L. Bass and
Dr. Robert L. Bass
Marjorie R. Bassman
Mr. and Mrs. Jim Bateman
Elizabeth Bates
M. Katherine Baumeister
Mrs. Helen L. Baumgardt and
Mr. Douglas R. Baumgardt
Mrs. Ann E. Baylor and
Mr. David M. Baylor
Mr. Ted Bean and
Ms. Kathy A. Brown
Carol and Fred Beck
Benny and Wilma Benitez
Mrs. Judith C. Bennett and
Mr. Nicholas L. Bennett
Mr. Bernard Berger and
Mrs. Ruth Ann Berger
Fred Bergert
Mr. Sidney T. Billingsley III and
Mrs. Caroline Billingsley
Mrs. Shriya Binari and
Mr. Vinay Binari
Mrs. Theresa W. Bisaga and
Mr. John J. Bisaga
Mr. Arthur H. Bishop and
Mrs. Nadine Bishop
Mrs. Maria Bishop
William and Leslie Bishop
Mrs. Lynne M. Black and
Mr. Dan M. Black
Mr. Larry Blair and Mrs. Kathy Blair
Mr. David Blumenstein
Dr. Reinhardt H. Bodenbender and
Sharon L. Wagnitz, R.N.
Ms. Peggie Bogstie
Mrs. Carol Boland and
Mr. Thomas J. Boland
Ms. Shannon Boone
Beverly and Terry Boschert
The Bortelho Family
Ms. Hazel B. Boyer
Mr. Richard H. Bradford
Mr. James Brody
Herb and Dee Brooks
Ellen and Sanford Brotman
Ms. Denna J. Brown and
Mr. Glen MacDonald
Mr. and Mrs. Gary W. Brown
Fred and Lesley Bubenhofer
Judith A. Buchino, Ph.D.
Mrs. Frances H. Buckler and
Mr. James L. Buckler
Dr. Beth Bullard
Mr. and Mrs. Frederick Burgess
Mr. Michael L. Burke
Burke Sporting Goods
Mr. William M. Burke

Ms. Avery L. Burns
Carshal and Jean Burris
Mr. John G. Busavage and
Mrs. Jane Busavage
Mr. Robert D. Busey and
Mrs. Lorraine C. Busey
Joseph and Janet Bush
Ms. Briton C. Camphouse
CAPAC
Ms. Diana Casale
Mrs. Alice R. Castillo and
Mr. Joseph B. Castillo, Jr.
Ms. Maria D. Cataneo
Chantilly Music Boosters
Captain James H. Chapman III and
Mrs. Kerri L. Chapman
Paul and Marie Charles
Mrs. Giovanna Chesler
Ms. Ana A. Chientaroli
Ms. Arlene L. Childs
Mrs. Cathy Chisholm and
Mr. Patrick Chisholm
Dr. Elizabeth Chong and
Dr. Jean Pilon
Mr. Mohamed D. Choumil
Don A. Christensen
Dorothy and John Cipriano
David and JoAnn Clark
Robert and Lisa Clark
Mr. and Mrs. Robert F. Clark
Sandra Clark
Mrs. Kathleen Clayton and
Mr. William Clayton
James and Diane Cole
Russ and Mary Collins
Mr. Bertrand P. Collobm
Col and Mrs. John F. Concannon III
Leona and Edward Conley, Jr.
Mr. Edward T. Connolly and
Mrs. Wilma T. Connolly
Mrs. Janet N. Conrad and
Mr. Robert Conrad
William and Carol Conrad
Ms. Adrienne H. Cook
Ms. Carole L. Cook
Ms. Jessica A. Cook
Ms. Belinda Cooper
Honorable and
Mrs. Wallace Covington
Mrs. Pauline R. Cratty and
Mr. William E. Cratty
Mr. Steven J. Cristiani and
Mrs. Vicki Cristiani
John H. Crockett, Jr., Ph.D. and
Mrs. Kathleen H. Crockett
Patrick Cunniff
Ms. Jacqueline B. Curley
Mr. Wilbur D. Curtis, Jr.
Mr. Michael P. Daniels
Dr. Paula M. Davidson
Mr. Bruce M. Davies
Mrs. Anna May Davis and
Mr. Arthur B. Davis
Mr. Stewart N. Davis
Alice DeKany
Mr. Thomas Deputy
Ms. Carol M. DeVany
Mr. and Mrs. Everitt W. Dickman
Ivan and Nancy Dietrich
Nikoleta Dineen
Ms. Larisa Dobriansky

Mary Donovan and Steve Wiley
 Mr. Richard L. Downey
 Ms. Joan Dreux
 Mr. Brian C. Drummond and
 Mrs. Bebe Drummond
 Mrs. Mary E. Dvoroznak and
 Mr. Michael A. Dvoroznak
 Mr. Michael J. Dwyer and
 Mrs. Virginia Dwyer
 Ms. Ruth P. Eagen
 Ms. Phyllis M. Ebben
 Ms. Jeanene Ebert
 Ron and Shirley Edwards
 Col. and Mrs. Lauris Eek, Jr.
 Eddie and Rachel Eitches
 Ms. Mary Beth Eller
 Ms. Sarah J. Elpern and
 Mr. Bruce I. Waxman
 Roy T. Englert
 Ms. Marlene A. Epstein
 Ms. Gladys Ettinger
 Jay and Louise Evertt
 ExxonMobil Foundation
 Gerard and Catherine Fahy
 Mr. Russell E. Farris
 Mary and John Featherly
 Dan and Jean Feighery
 Bruce and Judy Fisher
 Mr. Gerard H. Fisher and
 Mrs. Judith Fisher
 Mrs. Nancy L. Fisher and
 Mr. Spencer Fisher
 Kay and Rich Flaherty
 Mrs. Kathy M. Fleming and
 Mr. Deryl R. Fleming
 James J. Fletcher, Ph.D. and
 Mrs. Ethel A. Fletcher
 Mr. Thomas G. Fonseca
 Mr. Scot A. Forbis
 Mrs. Amy E. Foss and
 Mr. Robert Foss
 Mr. and Mrs. Robert N. Foss
 Mr. David Foster and
 Mrs. Jeannie L. Foster
 Daniel J. Foucheaux, Jr.
 Foxwood Communications
 Ms. Mary E. Fraker
 Mr. John Franklin III and
 Mrs. Elisabeth Franklin
 Mrs. Kathleen F. Franklin
 Mr. Lawrence M. Franks
 Kim Freeze and Howard Kaufner
 Ms. Aurilla M. Fusco and
 Mr. John Fusco
 Helen and Ken Fussell
 Michael R. Gabel, Ph.D. and
 Paula Ruth Gilbert, Ph.D.
 Janet and Wilfred Gagnon
 Ms. Eileen Gallagher
 Ms. Margaret W. Gallagher
 Mr. Jonathan Gann
 Mr. Karl Gansberg and
 Mrs. JoAnne Gansberg
 Mr. Qing Gao
 Mrs. Amelia F. Garcia
 Ms. Mary Gauthier
 Ms. Christy Gavitt
 James E. Gentle, Ph.D. and
 Mrs. Maria E. Gentle
 Ms. Rits B. Geoghegan
 Dr. and Mrs. Robert Gerbracht

Ms. Donella B. Gibson
 Mark and Sara Gibson
 Mr. Christian Gieseler
 Mr. Jeffrey W. Gilliam and
 Mrs. Adair Gilliam
 James and Donna Gilstrap
 Mr. Robert C. Glendinning, Jr.
 Mrs. Irene Gluck and
 Mr. Gabriel Gluck
 Mrs. Alice H. Grabowski and
 Mr. Jurek G. Grabowski
 Hans and Marg Grainer
 Linda E. Gramlich
 David Gray and
 Anne-Marie Huynh
 Mr. John Grazioso
 Mr. Alan S. Green and
 Ms. Lea Edwards
 Mr. Alan R. Gregory
 Randall and Susan Gressang
 Richard and Mary Grich
 Molly Grimsley
 Mrs. Sharon S. Grinstaff and
 Mr. Harold W. Grinstaff
 Mr. Carl Groth
 Ms. Audrey C. Guarino
 Ken and Fay Gubin
 Mr. Dustin B. Gunderson and
 Ms. Katie Skyrn
 Shelley P. Gutstein and
 Richard M. Williams
 Mr. Samuel L. Hack
 Mrs. Ruth M. Hageman and
 Mr. Lyle G. Hageman
 Mr. Lowell L. Hagy and
 Mrs. Nancy Hagy
 Michelle Hankins
 Mrs. Diane L. Hannon and
 Mr. Thomas R. Hannon
 Mrs. Kathryn V. Harrison and
 Mr. Russell Harrison
 Ms. Paula Hayes
 Mr. Larry Heath and
 Mrs. Jeanette Heath
 Charles and Kathryn Heberle
 Keith and Joyce Hellems
 Ms. Patricia A. Helwig
 Yuki and Richard Henninger
 Ms. April P. Herbert and
 Mr. Kevin F. Herbert
 Mr. John O. Herde and
 Mrs. Jacqueline Y. Herde
 Mr. Carlos A. Hernandez and
 Mrs. Sonia G. Hernandez
 Dr. and Mrs. Thomas H. Hill
 Mr. Edwin Hilliard and
 Mrs. Brenda Hilliard
 Dr. Carma Hinton
 Mr. Craig A. Hoepfl and
 Ms. Susanne Hoepfl-Wellenhofer
 Mrs. Barbara L. Hoffman and
 Mr. Charles F. Hoffman
 Joan Lisante Hood and James Hood
 Ms. Pamela N. Horak
 Brenda L. Horton
 David and Claudia Hottenstein
 Mrs. Amy L. Houser and
 Mr. David Houser
 Janet Hughes
 Mr. Joseph A. Humenik and
 Mrs. Elizabeth J. Humenik

Col. Willard J. Humphries and
 Mrs. Lorraine B. Humphries
 Dr. John B. Hunter and
 Susan Sweet Hunter
 Mrs. Carol J. Hurlburt
 Ms. Carolyn Hurwitz
 Mr. John Hutton and
 Mrs. Deborah Hutton
 Mary Frances Huza
 Mr. Phillip Imel and
 Mrs. Pat Imel
 Mrs. Twyla L. Insalaco and
 Mr. Joseph Insalaco
 Dimitrios Ioannou, Ph.D.
 Ivan Ives
 Mrs. Pamela K. Jackson and
 Mr. James Jackson
 Mr. Joseph P. Jennings and
 Mrs. Yvonne D. Jennings
 Ms. Deborah L. Jewell and
 Mr. Greg Hair
 Mr. Jesse Johnson
 Mr. Ty L. Johnson and
 Mrs. Cheryl L. Johnson
 Mr. Clarence L. Jones
 Debbie L. Jones
 Francis Dixon Jordan
 James and Dorothy Joslin
 J. Dan Joyce
 Ms. Cynthia Kacer
 Mr. Lawrence R. Kahler
 Mrs. Hedwig Kamai and
 Mr. Moses M. Kamai
 Stephen and Linda Kamen
 Joseph and Virginia Kanyan
 Harriet Kaplan
 Mrs. Clare C. Keating
 Mr. Kenneth C. Keating
 Mary Keiler
 David and Brenda Kepley
 Georgeanne and Thomas Kerwin
 Herb and Barbara Kiker
 Mr. Paul J. Kilmartin and
 Ms. Margaret N. Jones
 Ms. Mary M. Kimble and
 Mr. Randall U. Mottram
 Mr. Robert L. Kimmins
 Mr. William A. Kirby, Jr. and
 Mrs. Priscilla K. Kirby
 Ronald J. Klayton, M.D. and
 Mrs. Janet L. Klayton
 Anne and Chris Knowlton
 Ms. Lai-Lan Ko
 William H. Koch
 Mr. Gerald Koster
 Dr. Michael and
 Mrs. Linda Kostrzewa
 Ms. Gloria G. Krause
 Mr. and Mrs. P. Kruppenbacher
 Ms. Joanne Kunz
 Mr. Thomas R. LaHann and
 Mrs. Prescilla P. LaHann
 Corrine Lahti and Daniel Blum
 Mrs. Sandra J. Langknecht and
 Mr. John M. Langknecht
 Mr. Robert P. Lansell and
 Mrs. Suellen C. Lansell
 Mrs. Elaine G. LaPella and
 Mr. Patrick J. LaPella
 Mr. Charles Lapierre and
 Mrs. Marlene R. Lapierre

Mrs. Susan D. Larson and
 Mr. Donald C. Larson
 Mr. Paul R. Lawrence and
 Mrs. Ann P. Lawrence
 Mr. Michael L. Lee and
 Mrs. Eileen E. Lee
 Ms. Joan W. Leggett
 James Lepore
 Mr. Timothy Leslie and
 Mrs. Virginia S. Leslie
 Mrs. Roseanne M. Levay and
 Mr. Lester S. Levay
 Mr. Stephen M. Levin and
 Mrs. Olga Levin
 Mr. Wayne Lewandowski
 Mr. David A. Lewis and
 Ms. Lorie S. Lewis
 Mr. Kenneth I. Lindfors and
 Mrs. Betsy D. Lindfors
 Phyllis Liner
 Judy and George Livingston
 Lee R. and Mary L. C. Lohman
 Mr. Allen C. Lomax and Mrs.
 Marjorie L. Lomax
 Mr. John M. Longbottom and
 Mrs. Maureen Longbottom
 Anne and Peter Loughlin
 Mr. Walter H. Lubsen, Jr. and
 Mrs. Laurie Lubsen
 Vyacheslav and
 Valentina Lukin
 Mr. and Mrs. Charles P.
 MacDonald III
 Ms. Patricia A. MacEwan
 Ms. Claire H. Machosky
 Mr. Philip L. Magley and
 Mrs. Karen S. Magley
 Mr. Robert W. Magner and
 Mrs. Mary Ellen Magner
 Ms. Donna Malarkey
 Mrs. Eileen Mandell
 Warren and Bayda Manison
 Mrs. Patricia M. Marino and
 Mr. John H. Marino
 Mr. Michael T. Markley and
 Mrs. Lynne M. Markley
 Joyce and Avrum Marks
 Mary and John Marsh
 Ms. Ellie M. Marshall
 Luci Martel
 Scott M. Martin, D.M.A.
 Greg and Cyndi Matthes
 Mrs. Carol T. Mattock and
 Mr. Michael A. Mattock
 Mrs. Lynette V. Matz and
 Mr. Gary R. Matz
 John C. Mayers
 Ms. Brenda McDonald
 Mr. Ken McDowell and
 Mrs. Nancy McDowell
 Mrs. Magdalene J. McElhone
 Mr. John P. McGeehin and
 Ms. Cynde Sears
 Mr. Frank J. McGovern and
 Mrs. Haida S. McGovern
 Ms. Lisa J. McGuinness
 Judith K. McGuire
 Mr. John McInerney and
 Mrs. Nancy McInerney
 Ms. Kendra R. McLean
 Ms. Lisa McLeod
 Mrs. Margaret M. McManus and
 Mr. Terrence M. McManus
 David and Thuy McMurray
 Mr. Robert F. Mechler and
 Mrs. Barbara Mechler
 Mrs. Marilyn Meehan and
 Mr. Patrick Meehan
 Mrs. Mary A. Merrill
 Cornelia Meszaros
 Nelson and Louise Milder
 Chuck and LuAnn Miller
 Ms. Laurie B. Miller
 Roy and Herminie Miller
 Mrs. Sandra K. Mills and
 Mr. Samuel A. Mills, Jr.
 Mrs. Kelly Millward
 R. W. and Nora Missell
 Mr. Kirk B. Moberley and
 Mrs. Karen Moberley
 Mrs. Carolyn F. Modugno and
 Mr. Vincent Modugno
 Mojo Factory Productions, LLC
 Ms. Susan Moll
 Mrs. Jerilynn L. Monaghan and
 Mr. Jim Monaghan
 Ms. Mary H. Moniuszko
 Monte and Jane Montgomery
 M. Elizabeth Moore
 Mr. Richard E. Moore and
 Mrs. Patricia Moore
 Mrs. Susan D. Moran
 Mrs. Jean Motter and
 Mr. Charley Motter
 Mu Epsilon Chapter Sigma
 Alpha Iota
 Janette K. Muir, Ph.D. and
 Star A. Muir, Ph.D.
 Mrs. Elizabeth S. Murphy
 Mr. Roy A. Murray, Jr. and
 Mrs. Nancy Murray
 June Naclerio
 Denise and Steve Napoliello
 Alan and Gwen Nelson
 Ms. Beth Newburger
 Dr. Michael W. Nickens
 Ms. Melissa A. Nielson
 M. H. Norell
 Norfolk Southern Foundation
 Mr. Scott Nurmi
 Lisa O'Hara and Wayne Burstein
 Mr. Daniel E. Ohlms and
 Mrs. Glenna L. Ohlms
 Optometric Associates, P.C.
 Ms. Lillian Orlich
 Tim and Nancy Outlaw
 Mrs. Janice B. Overman and
 Mr. John E. Overman
 Mr. Dale R. Owens and
 Mrs. Ellen K. Owens
 Julianne M. Owens, Ph.D. and
 Coilin D. Owens, Ph.D.
 Mr. James A. Painter
 Ms. Patricia M. Papadopoulos
 Aris and Eva Pappas
 Mr. Andrew J. Parr and
 Mrs. Ruth L. Parr
 Mr. Jonathan D. Pavluk and
 Mrs. Donna G. Pavluk
 Mr. David Peach and
 Mrs. Janet Peach
 Mr. Terry R. Peel and Mrs. Ann Peel
 Mr. Joseph M. Perta
 Mr. Alan Peters
 Mr. Gary Pettit
 Robert and Sue Phillips
 Ms. Joyce D. Pieritz
 Marcia and Leslie Platt
 Col. and Mrs. E. D. Post
 Potomac Nationals Baseball
 Ms. Sharon L. Pound and
 Mr. Richard E. Pound
 David Pozorski and Anna Romanski
 The Prette Family
 Mr. Mark Pretzat
 Mrs. Angela P. Price
 Prince William County Public Schools
 Andre and Betsy Pugin
 Mrs. Cheryl B. Purdy and
 Mr. Jessie S. Purdy
 Marilyn Rahilly
 Mr. Lars A. Rasmusson and
 Mrs. Anita Rasmusson
 Steven and Pamela Rearden
 Mr. Paul Reisler
 Ms. Janet Rems
 Ms. Patricia J. Rentz
 Mr. Randall V. Rice and
 Mrs. Janice A. Rice
 Mr. Thomas P. Rice and
 Mrs. Cecilia Rice
 C. Carole Richard
 Mr. Daniel W. Riley and
 Mrs. Margaret C. Riley
 Jeffrey and Daniele Robbins
 Mrs. Karen K. Roberson and
 Mr. Raymond M. Roberson
 Mrs. Deborah C. Roberts and
 Mr. Thomas W. Roberts
 Mike and Laurie Robey
 Ellen Drogin Rodgers, Ph. D. and Dr.
 R. V. P. Rodgers
 Ms. Deborah Roney
 Mr. Steven M. Rosenberg
 John P. Roth
 Lori Ann Roth, Ph.D.
 Lillian and Chris Rouly
 Mr. Rolland Roup
 Julie R. Ruby
 Ms. Emily J. Russell
 Miss Traci Russell
 The Hon. John H. Rust, Jr. and
 Mrs. Susan Rust
 Mrs. Susana Salazar and
 Mr. Hector S. Salazar
 Ms. Michelle Samuelson
 James F. Sanford III, Ph.D. and
 Mrs. Evelyn S. Sanford
 Mr. Richard H. Sanger
 Mrs. Nancy D. Schleh and
 Mr. George Schleh
 Wayne and Kathy Schneider
 Mr. Kenneth Schwartz and
 Mrs. Joan Schwartz
 Mr. Steven R. Schwartz and
 Mrs. Rachel Schwartz
 Susan and David Schwartz
 Dr. and Mrs. Roger Schwartzberg
 Stanley and Linda Scofield
 Ms. Marilyn W. Scott
 Vincent M. Scott
 Ms. Hannah M. Senft
 Guy and Sylvia Shannon

Ms. Ruth B. Sharpe
 Mrs. Ninoska M. Shea and
 Mr. Richard C. Shea
 Steve Sheets
 Robert J. and Susan H. Shue
 Mrs. Willa B. Siegel and
 Mr. David H. Siegel
 Dr. Mary E. Silva
 Mr. Charles N. Silver and
 Mrs. Moo-Lan S. Silver
 Ms. Heidi Silvers
 Ms. Marcella Simon
 Ms. Patricia J. Simon
 Judith E. Skog, Ph.D.
 Mr. John H. Smith and Mrs.
 Margaret L. Smith
 Louis J. and Sharon A. Smith
 Mr. Robert J. Smith and
 Ms. Alison J. Dyer
 Mr. Donald W. Sodo and
 Mrs. Patricia M. Sodo
 Mr. Thomas J. Solak
 Ms. Karen L. Sparks
 Ms. Susan H. Speare
 Mrs. Virginia Stallings
 Mrs. Ann L. Stampf and
 Mr. Bill Stampf
 RADM and Mrs. James R. Stark
 Mrs. Teresa E. Stewart and
 Mr. John D. Stewart
 Mary and Donald Street
 Mrs. Rachel S. Strother and
 Mr. Dale E. Strother
 Dr. Sean P. Sullivan and
 Mrs. Kelu L. Sullivan
 Mrs. Carol Sumser
 Mrs. Lucile H. Suthard
 Dr. Valerie O. Sutter and
 Mr. Robert G. Sutter
 Mr. William M. Takis and
 Mrs. Sandra Takis
 June P. Tangney, Ph.D.

Ms. Bonnie S. Tarsia
 Mrs. Hilda T. Taschek and
 Mr. Walter G. Taschek
 Mrs. Jean A. Tatalias and
 Mr. Kosmo D. Tatalias
 Mr. Bruce E. Tate and
 Mrs. Emmeline Tate
 The Hon. David S. Tatel and
 Mrs. Edith S. Tatel
 D. Taylor and J. Allen
 Mr. Philip A. Taylor and
 Mrs. Darlene Taylor
 Mr. Bruce R. Terril and
 Mrs. Pamela Terril
 Texas de Brazil
 Brad and Gayle Thayer
 Mr. David R. Thompson and
 Mrs. Jill Thompson
 Wayne Titerence and Vicki Mechner
 Ms. Elaine Trautwein
 Mr. David Treworgy
 Mr. R. Evan True
 Jim Truscott and
 Colonel Rebecca J. MacKoy
 Rebecca and Patrick Turner
 Mrs. Joanne M. Tuttle and
 Mr. Herbert Tuttle
 Ms. Diana Van Broekhoven
 Ms. Rebecca U. Van Brunt
 Mr. Michael R. Vanderpool and
 Ms. Karen M. Settlemeyer
 Stephen and Leslie Vandiver
 Ms. Stephanie O. Verga
 Ms. Irma Estela Viale
 Visa Foundation
 Vista Technology Services, Inc.
 Dr. Richard Wahls and
 Mrs. Deborah Wahls
 Ms. Doris Waizecker and
 Mr. Adolf K. Waizecker
 Mr. Terry Walline
 Ms. Helen E. Walter

Ambassador and
 Mrs. George F. Ward
 Mr. John W. Warren
 Mike and Mary Anne Wassenberg
 Ms. Sheralyn Watkins
 Dave and Vivian Watts
 Laurence M. and
 Deborah W. Weinberg
 Maura and Ed Weiner
 Thelma Weiner
 Doris Weisman
 Mrs. Helen R. Wells and
 Mr. Elwood G. Wells
 Lynn and Laurel Wessman
 Deann Westman and Andrea Putscher
 Mrs. Margaret J. Wetzel and
 Mr. John C. Wetzel
 Dr. James L. White and
 Mrs. Barbara W. White
 Ms. Terri L. White
 Ms. Marlene F. Whiteley
 George Whitley
 Mr. Roger H. Wichelt and
 Mrs. Sonya Wichelt
 Harry and Sandra Wilbur
 William L. Schmidt & Associates
 Ms. Bettie L. Williams
 Mr. James M. Williams and
 Ms. Misti Mukherjee
 Mr. Sidney H. Williams and
 Mrs. Carol C. Williams
 Mr. George H. Williamson and
 Mrs. Kathryn Williamson
 Ms. Diane C. Wilson
 Edwyna M. Wingo
 Woman's Club of Manassas, Inc.
 Dr. S. David Wu and
 Mrs. Sheau Ping Wu
 Mr. Peter K. Yang
 Ms. Hillary Zimmerman and
 Mr. Christopher Hebel

We greatly appreciate our supporters at all levels and strive to ensure that all are acknowledged correctly.
 For corrections, please contact Ryan Braaten at (703) 993-8641 or rbraaten@gmu.edu.



THE RIGHT ANSWER FOR EVERY SUBJECT.

Preferred Marriott Hotels for George Mason University:

RESIDENCE INN FAIRFAX CITY - 1.9 Miles from Campus - www.marriott.com/IADRF

COURTYARD FAIRFAX FAIR OAKS - 2.7 Miles from Campus - www.marriott.com/IADFO

SPRINGHILL SUITES FAIRFAX FAIR OAKS - 2.8 Miles from Campus - www.marriott.com/IADFR

FAIRFAX MARRIOTT AT FAIR OAKS - 3.8 Miles from Campus - www.marriott.com/IADMC

RESIDENCE INN FAIR LAKES - 5.7 Miles from Campus - www.marriott.com/IADFL

FALLS CHURCH MARRIOTT FAIRVIEW PARK - 7.6 Miles from Campus - www.marriott.com/WASFP

SPRINGHILL SUITES CENTREVILLE CHANTILLY - 7.7 Miles from Campus - www.marriott.com/WASCV

COURTYARD DULLES AIRPORT CHANTILLY - 10.0 Miles from Campus - www.marriott.com/IADCA

TOWNEPLACE SUITES CHANTILLY DULLES SOUTH - 10.1 Miles from Campus - www.marriott.com/IADTS

RESIDENCE INN CHANTILLY DULLES SOUTH - 10.8 Miles from Campus - www.marriott.com/IADFX

For Individual Reservations please visit www.Marriott.com
and enter Corporate Code: G57

For 5 or More rooms, Group Arrangements
and Extra Special Incentives Contact:
Becky Tobin - Account Executive, Marriott Global Sales
(202) 365-8984 | GoMason@Marriott.com



COURTYARD®

